

# 1702 Series-Fixed Range Low Pressure Transmitters

- ▶ Pressure Ranges from 40 millibar to 1 Bar
- ▶ 316 S/S Diaphragm
- ▶ Voltage and Current Output Models
- ▶ Choice of Enclosures and Pressure Fittings

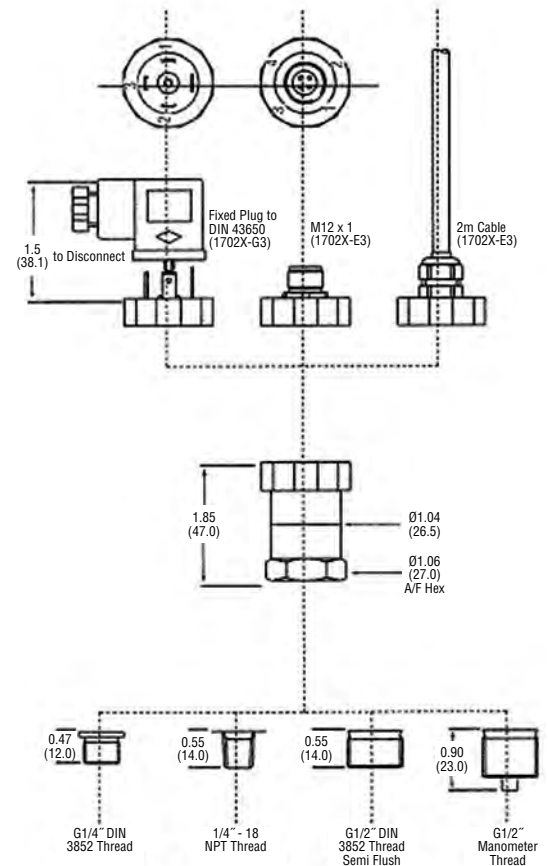
The Gems 1702 low range pressure transmitter is ideal for pneumatics, process control and chemical processes. Featuring a 316 S/S diaphragm and Viton® o-ring the 1702 is compatible with many corrosive medias. A choice of process connections makes the units suitable for direct pipe mounting whilst optional electrical outputs and connections allow interfacing with most systems.

## Specifications

<b>Input</b>	
<b>Pressure Range</b>	100 mbar to 1 bG, 100 mbar to 1bA
<b>Proof Pressure</b>	>2 x Full Scale
<b>Burst Pressure</b>	>2 x Full Scale
<b>Fatigue Life</b>	Designed for more than 100 million cycles
<b>Performance</b>	
<b>Long Term Drift</b>	±0.1% span/annum
<b>Accuracy</b>	0.25%
<b>Thermal Error Over Compensated Temperature</b>	1% (0°C to 70°C) - 1 bar, 2% for 100 mbar to 400 mbar ranges (0°C to 50°C)
<b>Operating Temperatures</b>	-13°F to +185°F (-25°C to +85°C) -13°F to +257°F (-25°C to +125°C) media
<b>Zero Tolerance</b>	1% of span
<b>Span Tolerance</b>	1% of span
<b>Mechanical Configuration</b>	
<b>Pressure Port</b>	see ordering chart
<b>Wetted Parts</b>	316 S/S, Viton®
<b>Electrical Connection</b>	see ordering chart
<b>Enclosure</b>	IP65 = G (with connector fitted) IP67 = E & F
<b>Vibration</b>	10g rms, 20 - 2000Hz
<b>Acceleration</b>	10g
<b>Shock</b>	100g 11ms
<b>Weight</b>	140gm
<b>Voltage Output Units</b>	
<b>Output</b>	see ordering chart
<b>Supply Voltage (Vs)</b>	12 to 36Vdc
<b>Supply Voltage Sensitivity</b>	0.005% FS/Volt
<b>Min. Load Resistance</b>	10Kohm
<b>Current Consumption</b>	7 mA max
<b>Current Output Units</b>	
<b>Output</b>	4 - 20mA 2 wire
<b>Supply Voltage (Vs)</b>	12 to 36Vdc
<b>Supply Voltage Sensitivity</b>	0.005% FS/Volt
<b>Max. Loop Resistance</b>	(Vs-12) x 50 ohms



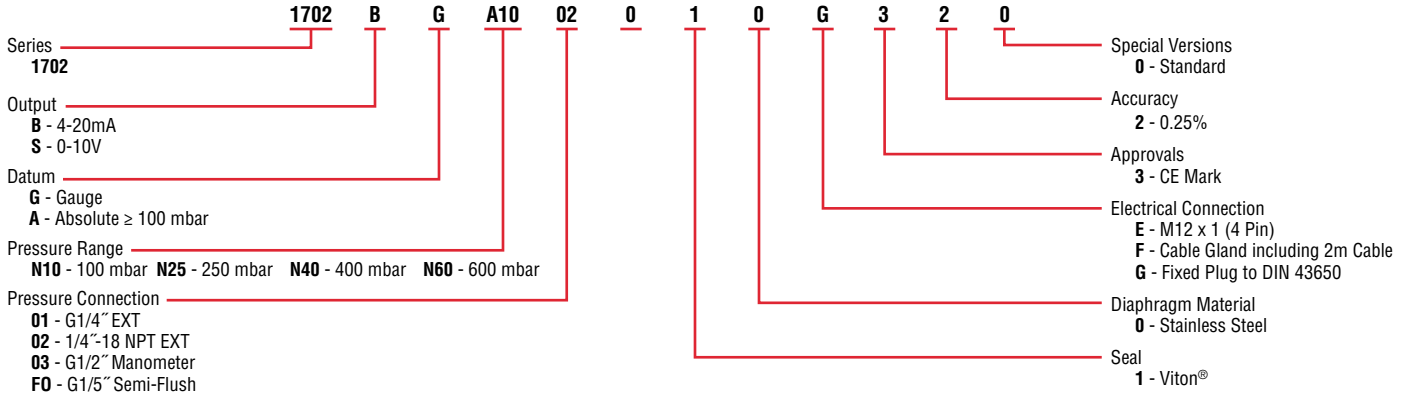
## Dimensions inch (mm)



PRESSURE TRANSDUCERS

## How to Order

Use the **bold** characters from the chart below to construct a product code



## Electrical Connections

Electrical Connection Code	2-Wire System			3-Wire System			
	Supply +	Supply -	Ground	Supply +	Supply -	Signal +	Ground
<b>E</b> M12 x 1 (4-pin)	1	2	4	1	2	3	4
<b>F</b> Cable	WH	BR	DRAIN	WH	BR	G	DRAIN
<b>G</b> "DIN 43650"	1	2	GROUND	1	2	3	GROUND

### Cable Legend:

WH = White  
BR = Brown  
G = Green