

Block & Bleed Valves - EB51

BLOCK & VENT VALVES

The economical EB51 features a fully packed and backseated block valve along with a bleed/plug. With a gauge or transmitter threaded in its outlet, the EB51 will allow pressure to be blocked and bled for convenient instrument removal. The EB51 can also be threaded into a Hex Primary Block Valve to provide secondary block and bleed functions.

Product Availability

All valves are available with integral hard seats, 316-NACE stainless steel body and trim and Teflon or Graphite packing.

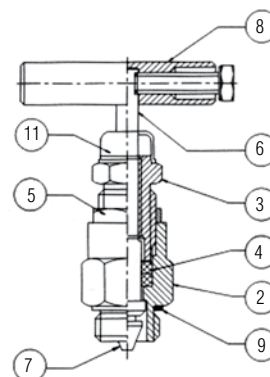
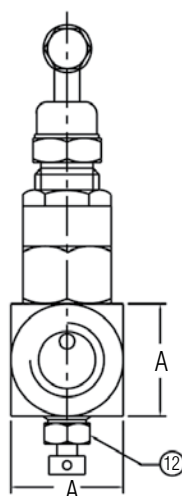
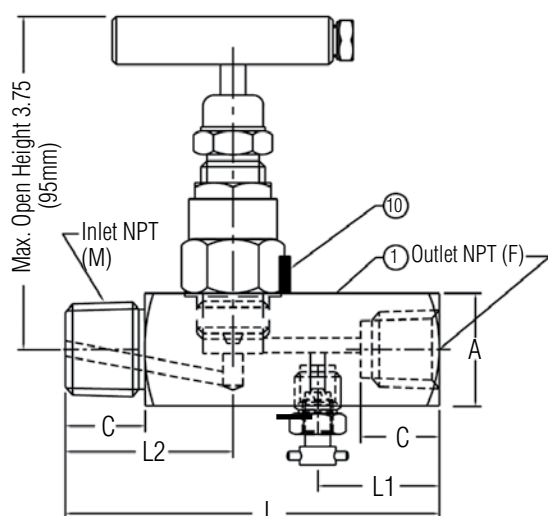
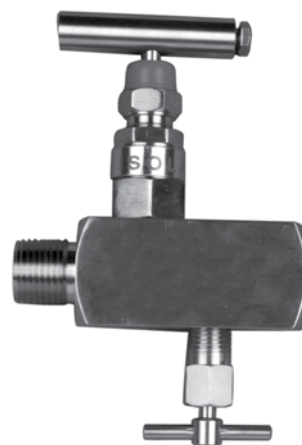
Hastelloy C, Monel models (see order grid) available upon request.

Ratings

Stainless Steel with TFE Packing:

6000 psig @ 100°F (414 bar @ 38°C)

4200 psig @ 400°F (290 bar @ 204°C)



| No. | Description | Material | Qty |
|-----|---------------------|------------|-----|
| 1 | Body | SS316/NACE | 1 |
| 2 | Gland Body | SS316/NACE | 1 |
| 3 | Gland Retainer | SS304 | 1 |
| 4 | Gland Seal | PTFE | 2 |
| 5 | Check Nut | SS304 | 1 |
| 6 | Spindle | SS316/NACE | 1 |
| 7 | Trim | SS316/NACE | 1 |
| 8 | Handle | SS304 | 1 |
| 9 | Washer | SS | 1 |
| 10 | Lock Pin | SS304 | 1 |
| 11 | Dust Cap | PVC | 1 |
| 12 | 1/4" NPT Bleed Plug | SS316/NACE | 1 |

Note: Other materials and options available.

| Size | L | L1 | L2 | C | A | Test Pressure Hydro. at Room Temp |
|-----------------------------|-----------|-----------|-----------|-----------|-----------|-----------------------------------|
| 1/2" NPT (M) x 1/2" NPT (F) | 88 (3.46) | 30 (1.18) | 40 (1.57) | 19 (0.75) | 32 (1.26) | 6000 psi |

| MODEL | BODY CONFIG. | BODY MAT'L | INLET SIZE | INLET TYPE | OUTLET SIZE | OUTLET TYPE | STEM/TIP | SEAT MAT'L | PACKING |
|-------|--------------|------------|------------|------------|-------------|-------------|----------|------------|---------|
| EB51 | 1 | D | 3 | 1 | 3 | 1 | 3 | 1 | 2 |

| MODEL | TYPE |
|-------|----------|
| EB51 | Standard |

| 10 | OUTLET TYPE |
|----|-------------|
| 1 | FNPT |

| 5 | BODY |
|---|-----------|
| 1 | Hard Seat |

| 11 | STEM/TIP |
|----|-------------------------|
| 3 | 316-NACE/316-NACE |
| B | Monel/Monel |
| D | Hastelloy C/Hastelloy C |

| 6 | BODY MATERIAL |
|---|---------------|
| D | 316SS-NACE |
| H | Hastelloy C |
| M | Monel |

| 12 | SEAT MATERIAL |
|----|---------------|
| 1 | Integral Seat |

| 7 | INLET SIZE |
|---|------------|
| 3 | 1/2" |

| 13 | PACKING |
|----|----------|
| 2 | TFE |
| 3 | Graphite |

| 8 | INLET TYPE |
|---|------------|
| 1 | MNPT |
| 3 | FNPT |

| 9 | OUTLET SIZE |
|---|-------------|
| 3 | 1/2" |

Note: Inlet and Outlet must be same size

*Available in 1/2" MNPT x 1/2" FNPT or 1/2" FNPT x 1/2" FNPT

Flow Schematic

