

Furon[®] PV Series Pump

Air Operated Fluoropolymer Bellows Pump (30lpm/8gpm; 60lpm/16gpm)

Description

Furon[®] PV series bellows pumps are designed based on 20 years of experience in handling a great variety of chemistry used in the semiconductor industry.

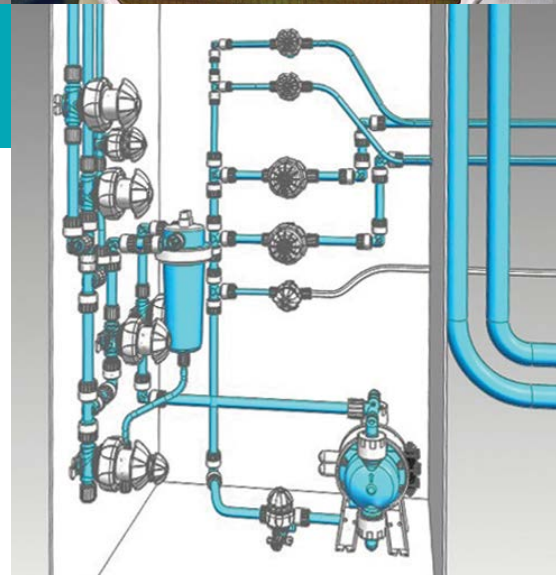
Our pumps are constructed with no metal parts. All wetted parts are manufactured from PFA and PTFE suitable for pumping even most aggressive chemicals.

The premium self priming capability of our product coupled with our plug & play driving system provide an easy installation & set up. Our innovative shuttle valve fixation technology allows us to provide three different driving systems to adapt our pump to exact customer requirements.

Furon[®] PV series bellows pumps come with a two years factory warranty on chemical applications. Upon completion of preventive maintenance (performed by a certified technician), the warranty is extended an additional two years up to a maximum of six years total warranty.

Applications

Furon[®] PV series bellows pumps offer the perfect solution for Photovoltaic, Chemical processing and Drain applications in the Semiconductor industry, or any industry where chemical resistance and maximum uptime is a must.



Features and Benefits

- Metal free pump
- O-Ring free flow path concept (tongue & groove concept)
- Self priming
- Fiber optic stroke sensor & leak detection system
- Warranty up to 6 years
 - 2 years renewable on chemical version
- Flexible driving system
 - Single shuttle
 - Extended driving
 - Anti-stalling through twin shuttle system
- Flexible connection system compatible with all fitting types

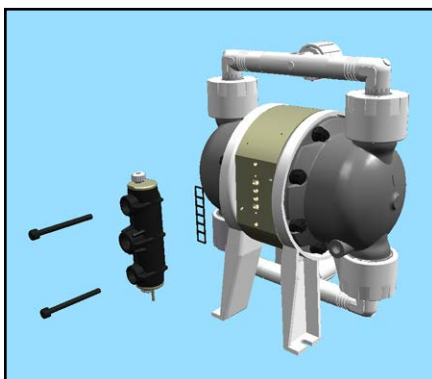
Furon® PV Series Pump

Specifications

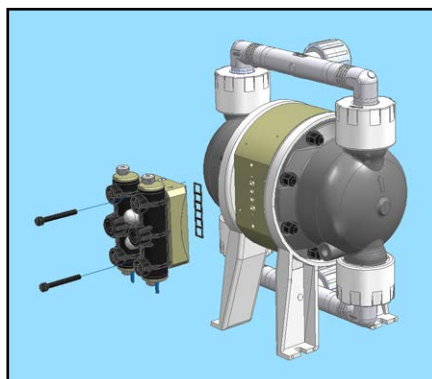
Pump Size	Maximum Flow Rate	Maximum Suction Head	Maximum Air Pressure*	Maximum Back Pressure	Maximum Air Consumption*	Temperature Range**	Weight
1	8 gpm - 30 lpm	12" - 3.5m	80 psi - 5.5 bar	80 psi - 5.5 bar	6 SCFM - 9 m ³ /h	30 - 195° F 0 - 90° C	9 lbs - 4.5 kg
2	16 gpm - 60 lpm	14" - 4m	80 psi - 5.5 bar	80 psi - 5.5 bar	9 SCFM - 14 m ³ /h	30 - 195° F 0 - 90° C	16 lbs - 8 kg

* Contact factory for use with higher pressure

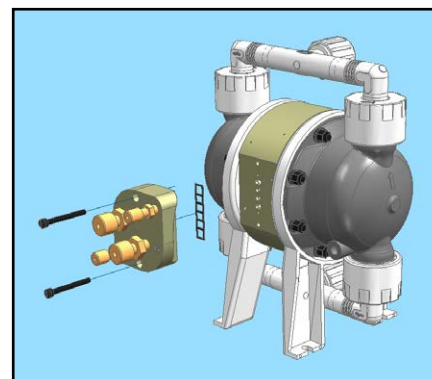
** Contact factory for use with higher temperature



Single shuttle valve driving system



Twin shuttle valve driving system
(anti stalling system)



External driving (allow a direct driving
through a PLC system)

Ordering Information

Base Part Number	Pump Size	End Connection Type	End Connection Size	Driving System		
				Single Standard Driving Shuttle Valve	TWIN Shuttle Valve Driving System	External Driving
A2PV2 F12	3	FlareGrip II®	3/4"	Nothing to add to the base Part Number	Add TWIN at the end of the base Part Number	Add EXT at the end of the base Part Number
A2PV2 T12		Tube End				
A2PV3 F16	3	FlareGrip II®	1"			
A2PV3 T16		Tube End				

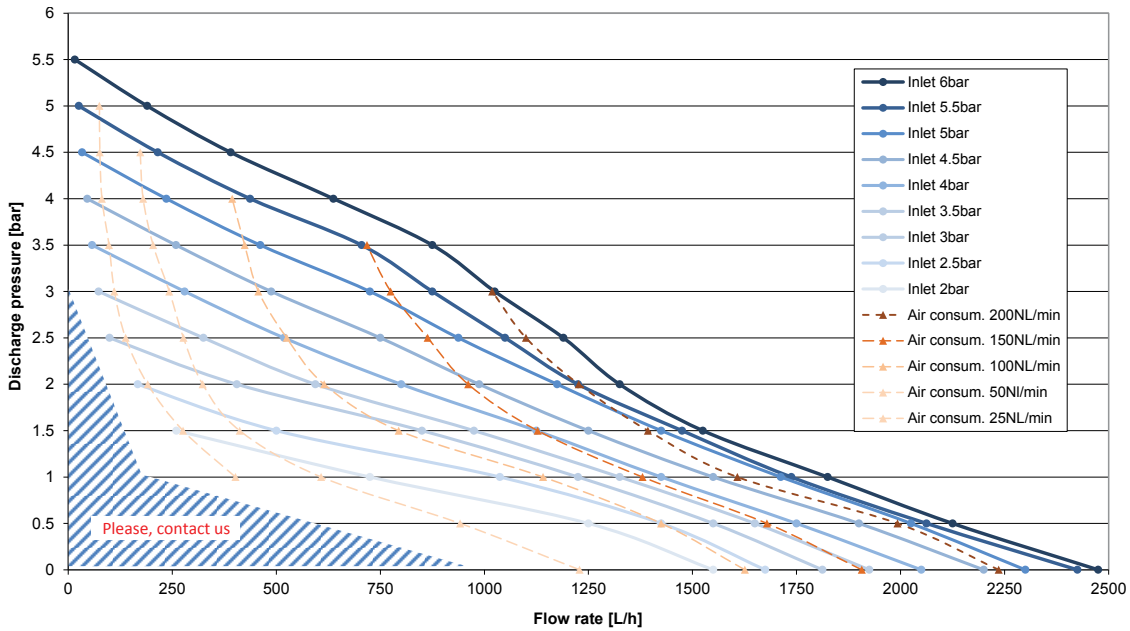
Standard Options

- Optic fiber for stroke counting (5m standard)
 - PN = 9475
- Fiber optic converter
 - PN = 8319
- Metal free leak detection system
 - LD1 for size 2 pump
 - LD2 for size 3 pump
- Other manifold orientations than the standard horizontal/horizontal
- Various combinations of end connections available (Flare, tube, pipe, NPT). Please contact our Technical Service for details

Flow Rate Curves

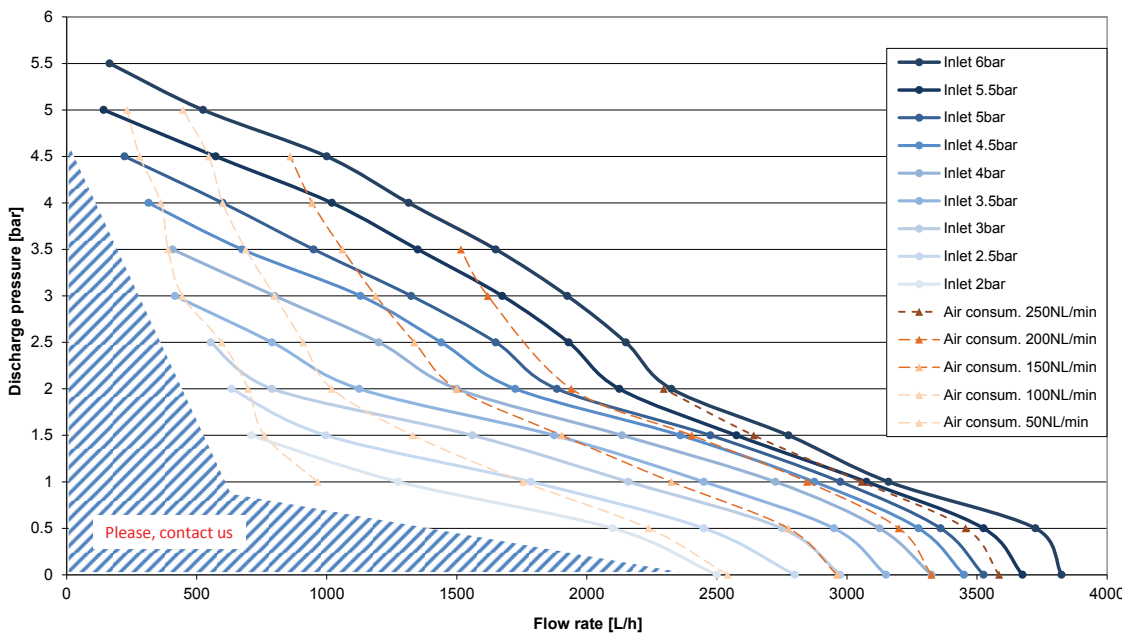
Pump Size 2

Inlet air pressure (bar) and air consumption (NL/min) as a function of fluid flow rate (L/h) and discharge pressure (bar) Pump chemical a2 size 2, Ø6x8 air pressure tube



Pump Size 3

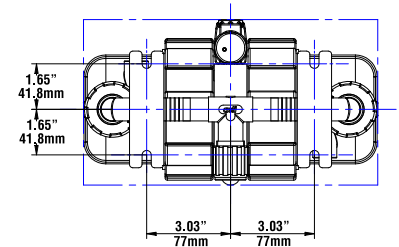
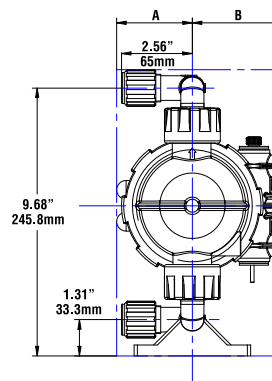
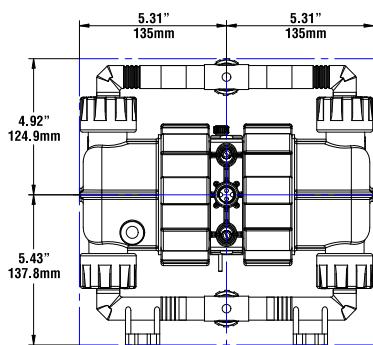
Inlet air pressure (bar) and air consumption (NL/min) as a function of fluid flow rate (L/h) and discharge pressure (bar) Pump chemical a2 size 3, Ø8x10 air pressure tube



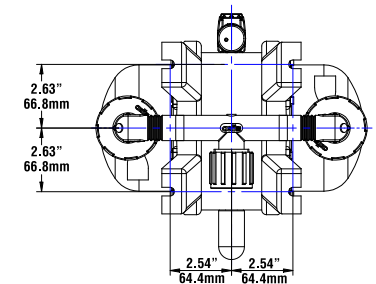
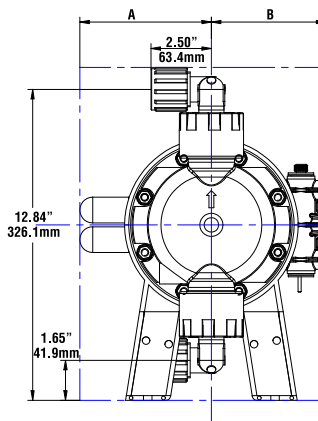
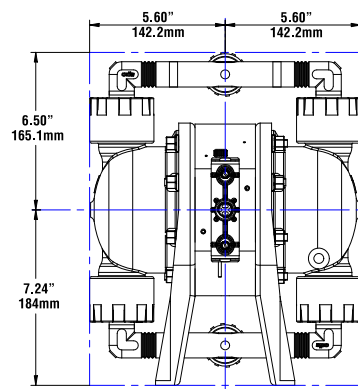
Dimensions

	Pump Size 2		Pump Size 3	
	Control Side	Muffler Side	Control Side	Muffler Side
	A	B	A	B
Single Shuttle	82.5 mm - 3.25"		120 mm - 4.72"	
Twin Shuttle	131 mm - 5.16"		148 mm - 5.84"	
External Shuttle	132 mm - 5.21"		148 mm - 5.84"	
Muffler Only		69.5 mm - 2.74"		138 mm - 5.43"
Muffler & Leak Detection System		95.5 mm - 3.72"		165 mm - 6.50"

Pump Size 2



Pump Size 3



Saint-Gobain Performance Plastics
 7301 Orangewood Avenue
 Garden Grove, CA 92841
 1-800-833-5661
 Tel: (714) 630-5818
 Fax: (714) 688-2614

Saint-Gobain Performance Plastics France
 56, Chemin des Berthilliers
 71850 CHARNAY LES MACON, France
 Tel: 33/(0) 3 85 20 27 00
 Fax: 33/(0) 3 85 29 18 48
www.processsystems.saint-gobain.com

NOTE: The data and details given in this document are correct and up to date. This document is intended to provide information about the product and possible applications. This document is not the product specification and does not provide specific features, nor does it guarantee product performance in specific applications. Saint-Gobain cannot anticipate or control the conditions of the field and for this reason strongly recommends that practical tests are conducted to ensure that the product meets the requirements of a specific application. Furon®, FlareGrip® and Nippon Pillar Super 300® are registered trademarks. FuseBond™ is a trademark.