

LPH UHP 250/375 Series

for Ultra High Purity

BOISWOOD
GAS AND LIQUID CONTROL TECHNOLOGIES

Pressure & Vacuum
Flow
Level & Temperature
Tube & Fittings
HVACR
Custom Services

Applications

- Ultra High Purity Gases

Key Features

- Compact Size
- Tube Stub

Features

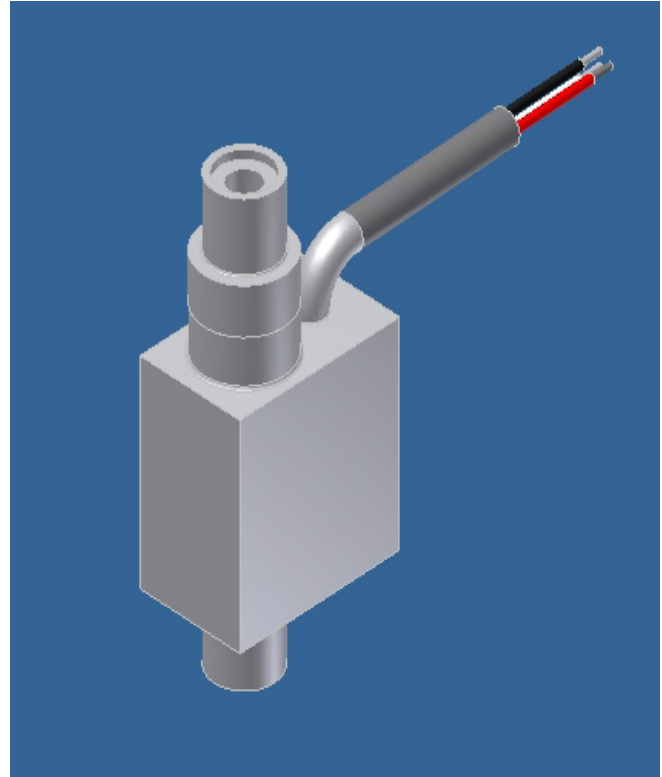
- Close On/Off Differential
- No Seals
- Internal finish 10RA
- 316L Stainless Steel Materials
- Senses High/Low Flow Conditions
- Switch Contact Output
- In-Line Vertical Plumbing
- Confirms Normal Flow Conditions

Operations

As flow is established upward through the unit and continues to increase, the pressure differential across the grooved magnetic piston increases until it overcomes the small piston's resistance. This causes it to progress fully upward which actuates a hermetically sealed reed switch.

Features

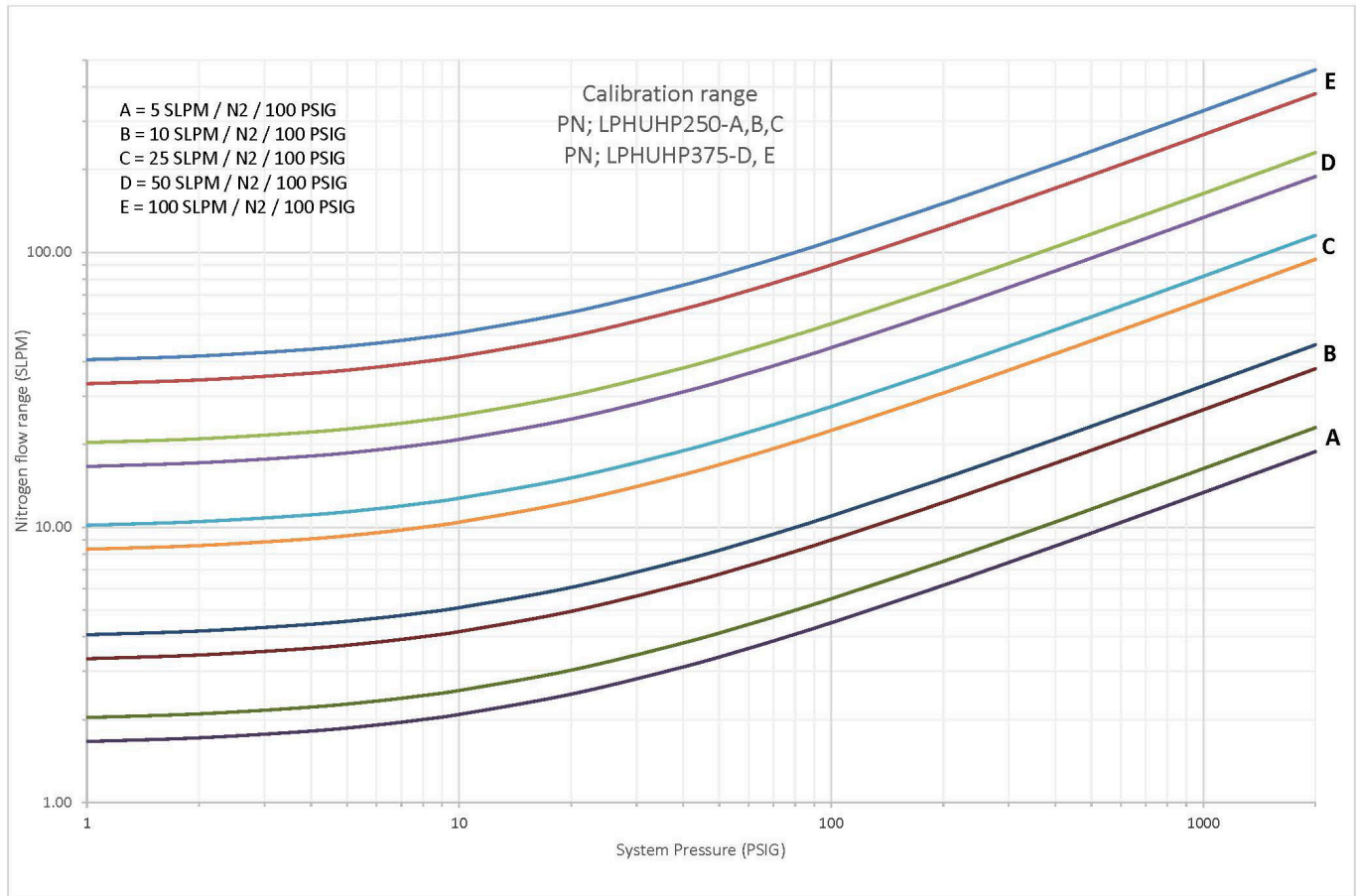
- Actuation Points for Nitrogen on increasing flow (see graph)
- Deactuation Points averages 10% less than actuation point
- Flow Setting Accuracy $\pm 10\%$ of actuation points shown
- Repeatability $\pm 1\%$
- Unit will pass greater flows



**Users are solely accountable for product selection, regardless of any recommendations or suggestions provided by ChemTec Equipment Company, Inc. Users should base product selection on their own analysis and testing to determine functionality and material compatibility in relation to their application. To ensure safe and trouble-free performance, it is essential to adhere to proper installation, operation, and maintenance procedures.*

ChemTec.com | info@ChemTec.com | P: 954.420.6174 | F: 954.428.8745 | 3077 S.W. 13th Dr., Deerfield Beach, FL 33442

LPH UHP 250/375 Series



| Switch Data | SPDT |
|-------------------------------|------|
| Maximum Switching Voltage | |
| DC (V) | 175 |
| AC (V) | 120 |
| Contact Rating | |
| DC (W) | 5 |
| AC (VA) | 5 |
| Maximum Switching Current (A) | |
| DC (A) | 0.25 |
| AC (A) | 0.18 |

Leads

- SPDT - 36" min. from body; 24 AWG PVC jacketed wire
- black: N.O., red: N.C., white: common

*Above values for resistive loads only. For inductive loads, surge current & rush current contact protection is required.

Temperature Operating Range

- -40° to 220°F; (-40° to 105°C)
- For other temperature ranges consult factory.

Calibration Range

| Model | Weight Lbs. (Kg) | Max Working Pressure PSIG (barg) | Wetted Parts | Fluid Ports | Leak Check |
|---------|---------------------|----------------------------------|----------------------------|----------------------|-----------------------------------|
| LPH-UHP | 0.3 lb/ 0.134 kg | 4000 PSIG (275.8 barg) | 316L Stainless Steel | 3/8" O.D. Tube | 1x10 atm. ccHe/sec in board |

Installation

Mount vertical with inlet port down.

How to Order

| Model | Calibration Range |
|-----------------|-----------------------|
| LPH UHP 250/375 | A B C D E |

*Contact factory for more options.

*Users are solely accountable for product selection, regardless of any recommendations or suggestions provided by ChemTec Equipment Company, Inc. Users should base product selection on their own analysis and testing to determine functionality and material compatibility in relation to their application. To ensure safe and trouble-free performance, it is essential to adhere to proper installation, operation, and maintenance procedures.