

# Compact, Low-Cost Pressure Sensor

CPS-100 Series: Designed For Reliable Performance in Challenging Locations at a Competitive Price

## Compact Design

Ideal for Installation Where Space is at a Premium

## Wide Media Compatibility

17-4 PH SS Wetted Parts for Use in a Wide Range of Applications

## IP67 Rated Electrical Connections

M12, Mini-DIN & Packard Electrical Connections are Available

## Multiple Pressure Port Options

Variety of Standard Ports Ensures Application Flexibility

## Value Engineered, Dependable Design

The CPS-100 Series features 0.25% Full Scale (FS) accuracy, designed for more than 100M repeatable cycles.

## Reliable Operation Across Wide Pressure Ranges

The CPS-100 Series is available to fit all your applications needs with models from 0-150 psi (0-10 bar), up to 0-1,500 psi (0-100 bar).

## Hermetically-Sealed Pressure Cavity

The CPS-100 Series has no internal O-rings or seals, which eliminates the potential for leaks.

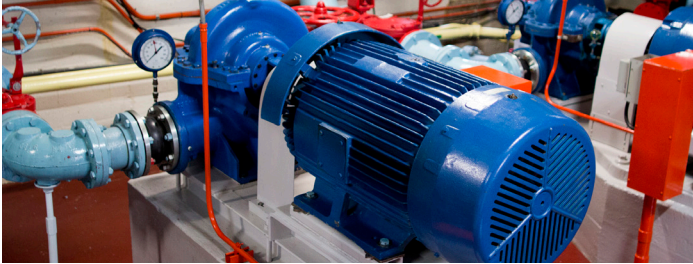
## Highly Compatible with Harsh Chemicals & Environments

The CPS-100 Series contains 17-4 PH Stainless Steel wetted parts and an all welded construction.



## CPS-100 Series

# Ready to Serve Your Most Demanding Applications



## Water & Booster Pumps

Features 17-4 stainless steel construction



## Air Compressors

High vibration resistance & sensor longevity



## HVAC & R

Dependable performance at a competitive price



## Power Generation

Reliable, constant pressure monitoring

### CPS-100 Series Competitive Advantages

- ✓ **Operates Over Wide Media & Temperature Range** – Resistant to harsh chemicals and environments and operates from -40° F to +185° F (-40° C to +85° C)
- ✓ **Electronically Configurable** – Multiple outputs, electrical connections and pressure ports are available
- ✓ **Fast Power-On** – Ideal for remote and battery-powered installations where power draw must be minimized
- ✓ **Lightweight, Compact Design** – Product is less than 2 inches (50 mm) long and weighs under 2 ounces (75 grams)
- ✓ **High Vibration Resistance** – Able to provide accurate readings under harsh environmental conditions
- ✓ **Zero Leakage** – Hermetically-sealed pressure assembly
- ✓ **Approvals** – CE and RoHS

### CPS-100 Series Options

- ✓ **Electrical Conductions**
  - Industrial DIN 9.4 mm
  - M12 x 1
  - Packard MetriPack
- ✓ **Pressure Ranges**
  - 0-150 PSI to 0-1,500 PSI (0-10 bar to 0-100 bar) Ranges
- ✓ **Pressure Ports**
  - G 1/4" - 19 External
  - 1/4" - 18 NPT
  - G 1/4" - 19 A Integral Face Seal
  - 1/8" - 27 NPT
  - Schrader SAE #4, 7/16" Internal

Visit [gemssensors.com](http://gemssensors.com)  
to View Our Full Range  
of Products



PS61 Sub-Miniature  
Pressure Switches



PS71 Hydraulic  
Pressure Switches



LS-3 Liquid  
Level Switches



XM/XT-700 Liquid  
Level Sensors