

## Gauge Pressure Manifold Valves - EM59

### TWO VALVE MANIFOLD: REMOTE MOUNT

The EM59 is a compact remote mounted two valve manifold that functions as a shutoff and vent valve for static pressure instrumentation. Compared to traditional piping methods that use an arrangement of pipe nipples or tubing, Tees and hand valves, the EM59 Series provides an easy-to-install unit that performs the same function for less material and labor cost. The EM59 also reduces the number of threaded connections, resulting in fewer potential leak points.

### Product Availability

All valves are available with integral hard seats, 316-NACE stainless steel body and trim and Teflon or Graphite packing.

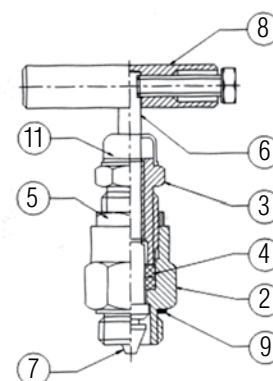
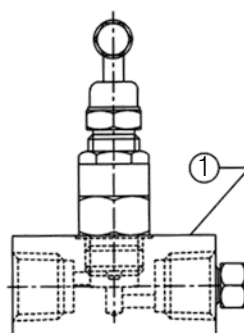
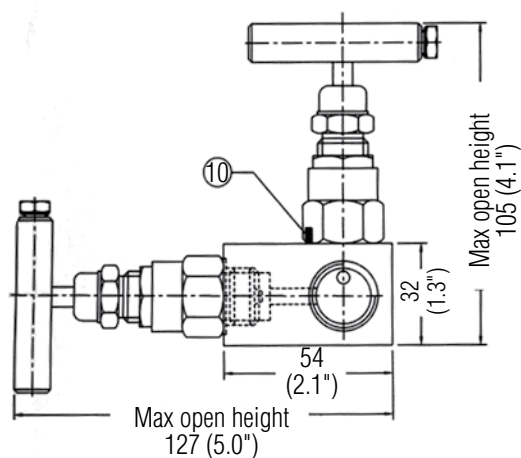
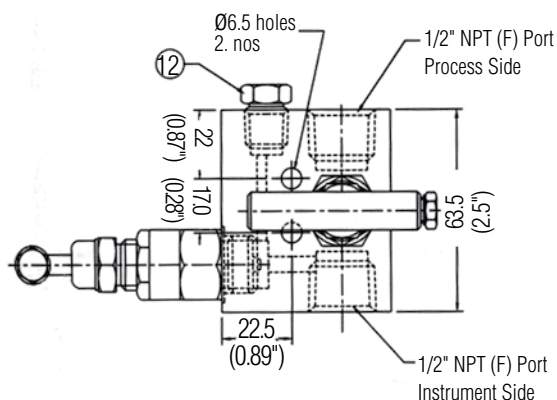
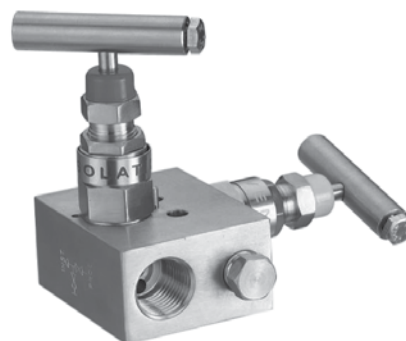
Hastelloy C, Monel models (see order grid) available upon request.

### Ratings

Stainless Steel with TFE Packing:

6000 psig @ 100°F (414 bar @ 38°C)

4200 psig @ 400°F (290 bar @ 204°C)



No.	Description	Material	Qty
1	Body	SS316/NACE	1
2	Gland Body	SS316/NACE	2
3	Gland Retainer	SS304	2
4	Gland Seal	PTFE	4
5	Check Nut	SS304	2
6	Spindle	SS316/NACE	2
7	Trim	SS316/NACE	2
8	Handle	SS304	2
9	Washer	SS	2
10	Lock Pin	SS304	2
11	Dust Cap	PVC	2
12	1/4" NPT Drain Plug	SS316/NACE	1

Note: Other materials and options available.

MODEL	BODY CONFIG.	BODY MAT'L	INLET SIZE	INLET TYPE	OUTLET SIZE	OUTLET TYPE	STEM/TIP	SEAT MAT'L	PACKING
EM59	1	D	3	3	3	1	3	1	2

MODEL	TYPE
EM59	Standard

5	BODY
1	Hard Seat

6	BODY MATERIAL
D	316SS NACE
H	Hastelloy C
M	Monel

7	INLET SIZE
3	1/2"

8	INLET TYPE
3	FNPT

9	OUTLET SIZE
3	1/2"

10	OUTLET TYPE
1	FNPT

11	STEM/TIP
3	316-NACE/316-NACE
B	Monel/Monel
D	Hastelloy C/Hastelloy C

12	SEAT MATERIAL
1	Integral Seat

13	PACKING
2	TFE
3	Graphite

## Flow Schematic

