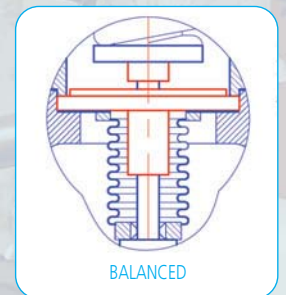
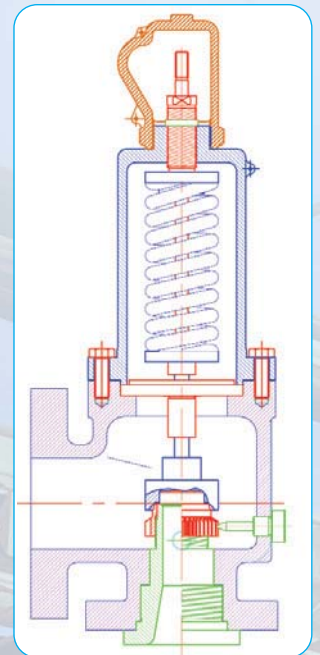


# Type 300



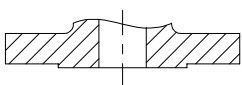
		FLANGE		MAXIMUM PRESSURE		FLANGE				MAXIMUM PRESSURE	
TYPE	ORIFICE	IN	OUT*	-29 à 38	<425°C	TYPE	ORIFICE	IN	OUT*	-29 à 38	<425°C
1D2	0,71 cm <sup>2</sup>	150	150	20	6	3K4	11,86 cm <sup>2</sup>	300	150	20	20
1D2	0,71 cm <sup>2</sup>	300	150	20	20	3K4	11,86 cm <sup>2</sup>	300	150	51	2
1D2	0,71 cm <sup>2</sup>	300	150	51	29	3K4	11,86 cm <sup>2</sup>	600	150	102	58
1D2	0,71 cm <sup>2</sup>	600	150	102	58	3L4	18,41 cm <sup>2</sup>	150	150	20	5,5
1E2	1,26 cm <sup>2</sup>	150	150	20	6	3L4	18,41 cm <sup>2</sup>	300	150	20	20
1E2	1,26 cm <sup>2</sup>	300	150	20	20	4L6	18,41 cm <sup>2</sup>	300	150	51	28
1E2	1,26 cm <sup>2</sup>	300	150	51	29	4L6	18,41 cm <sup>2</sup>	600	150	69	57
1E2	1,26 cm <sup>2</sup>	600	150	102	58	4M6	23,2 cm <sup>2</sup>	150	150	20	5,5
1 1/2 F 2	1,98 cm <sup>2</sup>	150	150	20	6	4M6	23,2 cm <sup>2</sup>	300	150	20	20
1 1/2 F 2	1,98 cm <sup>2</sup>	300	150	20	20	4M6	23,2 cm <sup>2</sup>	300	150	51	28
1 1/2 F 2	1,98 cm <sup>2</sup>	300	150	51	29	4M6	23,2 cm <sup>2</sup>	600	150	76	57
1 1/2 F 2	1,98 cm <sup>2</sup>	600	150	102	58	4N6	28 cm <sup>2</sup>	150	150	20	5,5
1 1/2 G 2	3,24 cm <sup>2</sup>	150	150	20	6	4N6	28 cm <sup>2</sup>	300	150	20	20
1 1/2 G 2	3,24 cm <sup>2</sup>	300	150	20	20	4N6	28 cm <sup>2</sup>	300	150	51	28
1 1/2 G 2	3,24 cm <sup>2</sup>	300	150	51	29	4N6	28 cm <sup>2</sup>	600	150	69	57
1 1/2 G 2	3,24 cm <sup>2</sup>	600	150	102	48	4P6	41,2 cm <sup>2</sup>	150	150	20	5,5
1 1/2 H 3	5,06 cm <sup>2</sup>	150	150	20	6	4P6	41,2 cm <sup>2</sup>	300	150	20	20
1 1/2 H 3	5,06 cm <sup>2</sup>	300	150	20	20	4P6	41,2 cm <sup>2</sup>	300	150	36	28
2 H 3	5,06 cm <sup>2</sup>	300	150	51	29	4P6	41,2 cm <sup>2</sup>	600	150	69	57
2 H 3	5,06 cm <sup>2</sup>	600	150	102	58	6Q8	71,2 cm <sup>2</sup>	150	150	11	5,5
2 J 3	8,3 cm <sup>2</sup>	150	150	20	6	6Q8	71,2 cm <sup>2</sup>	300	150	11	11
2 J 3	8,3 cm <sup>2</sup>	300	150	20	20	6Q8	71,2 cm <sup>2</sup>	300	150	21	21
3 J 4	8,3 cm <sup>2</sup>	300	150	51	29	6Q8	71,2 cm <sup>2</sup>	600	150	41	41
3 J 4	8,3 cm <sup>2</sup>	600	150	102	58	6R8	103 cm <sup>2</sup>	150	150	7	5,5
3 K 4	11,86 cm <sup>2</sup>	150	150	20	6	6R8	103 cm <sup>2</sup>	300	150	7	7

\* GN 300 possible / Available in Standard PN

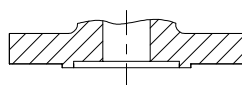


## Connection

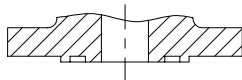
RAISED FACE  
CLASS 150 - 300 - 600 - ...  
PN 16 - 40 - 100 - ...



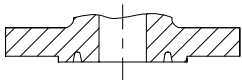
MALE FEMALE FACING



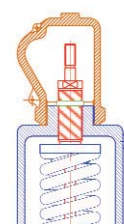
TONGUE GROOVE FACING



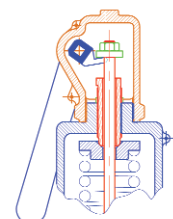
RTJ



TIGHT PLUG WITHOUT LEVER



TIGHT PLUG WITH LEVER

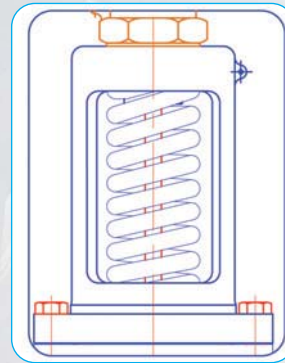


# Special design

**EPOXY  
PAINTING**



**DISC WITH  
O'RING OR  
STELLITE**



**OPEN  
CHUNK**



## Order informations

MODEL	PLUG	NOZZLE	MATERIAL	CLASS / PN	OPTIONS	INLET	ORIFICE	OUTLET
3 TYPE API	1 TIGHT WITHOUT LEVER	1 STANDARD	A - STEEL	1 : 150 X 150	ST : STELLITED	1 = 1"	D - E	2 = 2"
				2 : PN16 X PN16		7 = 1.1/2"	F	2 = 2"
				3 : 300 X 150			G - H	3 = 3"
	2 TIGHT WITH LEVER			4 : PN40 X PN16	VB : BLOCKING SCREW	2 = 2"	H - J	3 = 3"
				5 : 300LT X 150		3 = 3"	J - K - L	4 = 4"
	3 OPEN SHANK WITH LEVER	2 BELOW		I- STAINLESS STEEL	6 : 600 X 150	4 = 4"	L - M N - P	6 = 6"
				7 : 600 X 300	6 = 6"	Q - R	8 = 8"	