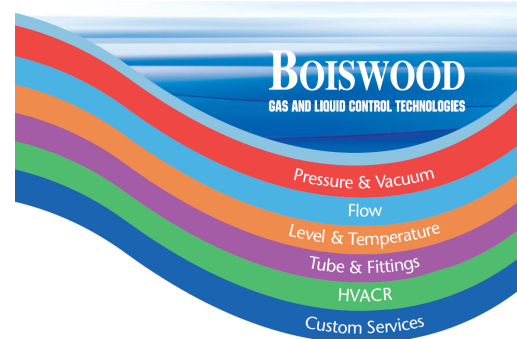


## LEVEL CONTROL

# Steam trap KA 2 ATEX H2

Universal valve for potentially explosive atmospheres



### Technical data

Connection DN	DN 25 x 3/4A
Connection G	1/2 x 1/2A 3/4 x 1/2A 1 x 3/4A
Nominal pressure PN	16
Operating pressure	0 - 12 bar
Flow rate	2 - 1570 l/h
Temperature	0 ... 130 °C
Medium	compressed air, gases and cold condensates

### Description

Steam traps automatically drain condensate without loss of steam or gas. They operate instantaneously and are not affected by back pressure or pressure fluctuations. They do not require an external energy input. KA 2 is a float-controlled steam trap for all applications and especially suitable for corrosive condensate and applications in the food industry. It is entirely manufactured from stainless steel featuring excellent corrosion resistance. The valve is fitted with a soft seal. Top and bottom sections of the valve body are connected by a clamp ring and two bolts. Servicing/maintenance is easy and does not call for special tooling. The simple design makes it easy to specify, install, handle and service these valves in an industrial environment.

### Standard

- » All stainless steel construction

### Special features of the ATEX version

- » Compliance to ATEX directive 2014/34/EU and DIN EN ISO 80079-36
- » Grounding lug at the valve body
- » Electrically conductive components

### Options

- » Various seal materials suitable for your medium

### Product



Picture similar

### Technical specification

#### ATEX marking

Ex II 2G Ex h IIB+H2 85°C...130°C GB X

#### Pressure ranges [bar]

0 - 2	0 - 6	0 - 12
-------	-------	--------

Please state working pressure range when enquiring or ordering.

#### Flow rate [l/h]\*

Δp bar	G 1/2 - G 3/4 x 1/2A			G 1 x 3/4A, DN 25 x 3/4A		
	Pressure ranges bar *			Pressure ranges bar *		
	0 - 2	0 - 6	0 - 12	0 - 2	0 - 6	0 - 12
0.02	30	11	2	150	34	11
0.05	50	17	4	240	54	17
0.1	70	19	6	350	75	25
0.2	100	28	9	490	105	35
0.5	160	40	12	780	170	55
1	230	70	18	1100	240	75
2	350	110	27	1570	340	110
4	-	160	46	-	480	155
6	-	200	50	-	590	190
8	-	-	60	-	-	220
10	-	-	70	-	-	250
12	-	-	75	-	-	270

\*Cold condensate (20°C)

## Materials

Materials	
Body	Stainless steel
Body seal	FEPM
Seat	Stainless steel
Float	Stainless steel
Valve seal	Metallic

\*All materials equal or of higher quality

## Dimensions and weights

Dimensions [mm]				
size	nominal diameter			
	G 1/2 x 1/2A	G 3/4 x 1/2A	G 1 x 3/4A	G 1 x 3/4A
A*	87	27	140	140
B*	100	135	145	160
C	45	-	40	40

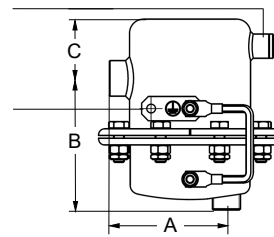
\*overall length tolerances in acc. with DIN EN 558

Weights [kg]			
nominal diameter			
G 1/2 x 1/2A	G 3/4 x 1/2A	G 1 x 3/4A	DN 25 x 3/4A
1.1	0.85	2.6	3.5

Customs tariff number	
84818059	

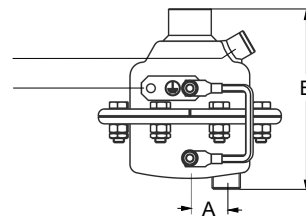
**G 1/2 x 1/2A**  
compensation line  
connection G 1/4

grounding device



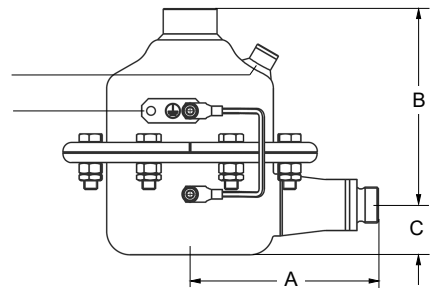
**G 3/4 x 1/2A**

compensation line  
connection G 1/4  
grounding device



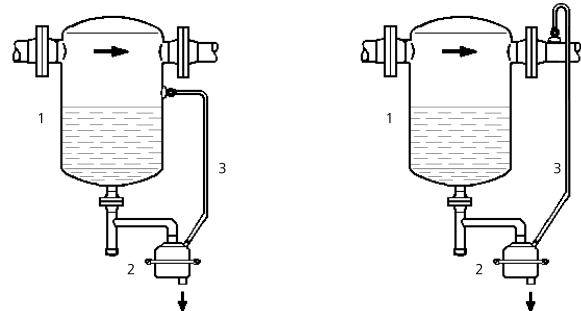
**G 1 x 3/4A**

compensation line  
connection G 1/4  
grounding device



## Recommended installation

- 1 Condensate collection tank
- 2 Steam trap
- 3 Compensation line



Please send us your enquiry and allow us to advise you. Special designs on request.  
The pressure has always been indicated as overpressure. Mankenberg reserves the right to alter technical specifications without notice.

Mankenberg GmbH

Spenglerstrasse 99

D-23556 Luebeck | Germany

Phone: +49 (0) 451-8 79 75 0

Fax: +49 (0) 451-8 79 75 99

info@mankenberg.de

www.mankenberg.com