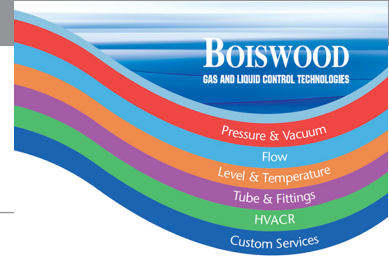


SERIES C3



DESCRIPTION

- Series «C3» check valves are available with different connectors.
- The maximum operating pressure is 300 bar.
- Maximum differential pressure: 200 bar
- Different cracking pressures are available.
- A colored label indicates the opening pressure.

TECHNICAL DATA

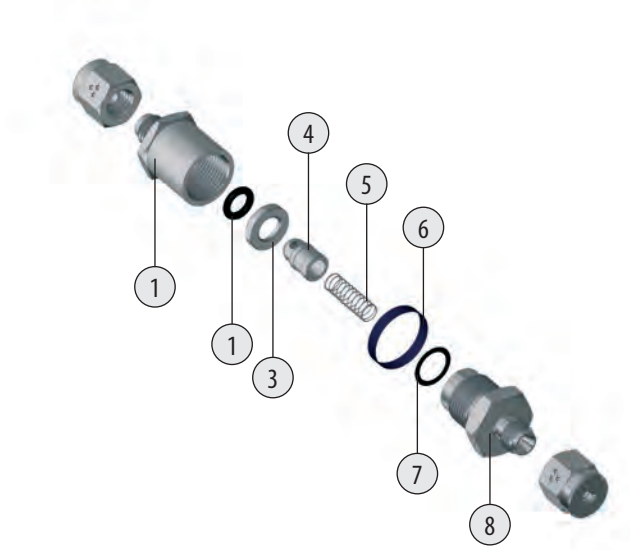
	Stainless steel	Brass
Maximum working pressure	300 bar (4351 psig)	200 bar (2900 psig)
Maximum back pressure	300 bar (4351 psig)	200 bar (2900 psig)
Δ P Maximum	200 bar (2900 psig)	
Temperature range	See the "Seal material" table	
Cracking pressure (psig)	1/3, 1, 3, 5, 10, 25, 40, 50	

Seal Material	Ref.	Temperature rating
FPM (fluorocarbon Rubber)	FPM	-25° C to 200° C -13° F to 392° F
NBR (Nitrile)	NBR	-30° C to 120° C -22° F to 248° F
EPDM (Ethylene Propylene Rubber)	EPDM	-50° C to 135° C -58° F to 275° F
PTFE* (Teflon)	PTFE	-40° C to 180° C -40° F to 356° F

*PTFE will not guaranty the tightness except when high back pressure is applied.

PART LIST

Item	Description	Material
1	Inlet body	AISI 316L 316L
2	Seat	See table FPM*
3	Seat stand	See table 316L
4	Valve	AISI 316L 316L
5	Spring	302 302
6	Colored label	AISI 316L PP
7	O-ring	FPM*
8	Outlet body	316L

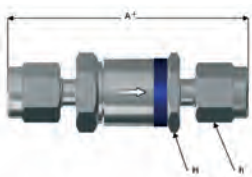


HOW TO ORDER (Example: 4F4M - C1 - 1 - SS - EPDM)

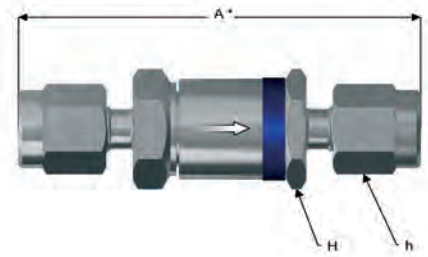
Inlet connections	Outlet connections	Serie	Cracking pressure	Material	O-ring Material
4F	4M	C1	1	SS	EPDM
4M	4M	C1	1/3	Stainless steel	FPM*
4F	4F		1	Brass	NBR
8M	8M		3		EPDM
8F	8F		5		PTFE
			10		
			25		
			40		
			50		

* FPM is the standard, you don't have to specify it. See page 04 for connections

DIMENSIONS



Part Number	inlet	Outlet	A		H	
			mm	inch	mm	inch
4M-C1.*	1/4" male NPT	1/4" male NPT	41	1,61	14	0,55
4F-C1.*	1/4" female NPT	1/4" female NPT	47	1,85	19	0,75
4M 4F-C1.*	1/4" male NPT	1/4" female NPT	44	1,73	19	0,75
4F 4M-C1.*	1/4" female NPT	1/4" male NPT	44	1,73	19	0,75
8M-C1.*	1/2" male NPT	1/2" male NPT	65	2,56	22	0,87
8F-C1.*	1/2" female NPT	1/2" female NPT	75	2,95	27	1,06
8M 8F-C1.*	1/2" male NPT	1/2" female NPT	70	2,76	27	1,06
8F 8M-C1.*	1/2" female NPT	1/2" male NPT	70	2,76	27	1,06



DIMENSIONS

Part Number	Connections		Orifice Size		A*		H		h	
	Inlet	Outlet	mm	inch	mm	inch	mm	inch	mm	inch
2S-C3-*	1/8" Tube fittings	1/8" Tube fittings	2,4	0,09	57,5	2,26	19	0,75	12	0,47
2A-C3-*	1/8" Tube adapter	1/8" Tube adapter	2	0,08	54,0	2,13	19	0,75		
2M-C3-*	1/8" Male NPT	1/8" Male NPT	3,2	0,13	46,0	1,81	19	0,75		
2F-C3-*	1/8" Female NPT	1/8" Female NPT	3,2	0,13	46,0	1,81	19	0,75		
2M2F-C3-*	1/8" Male NPT	1/8" Female NPT	3,2	0,13	46,0	1,81	19	0,75		
2F2M-C3-*	1/8" Female NPT	1/8" Male NPT	3,2	0,13	46,0	1,81	19	0,75		
2MP-C3-*	1/8" Male BSPP	1/8" Male BSPP	3,2	0,13	46,0	1,81	19	0,75		
2FP-C3-*	1/8" Female BSPP	1/8" Female BSPP	3,2	0,13	46,0	1,81	19	0,75		
2MT-C3-*	1/8" Male BSPT	1/8" Male BSPT	3,2	0,13	46,0	1,81	19	0,75		
2FT-C3-*	1/8" Female BSPT	1/8" Female BSPT	3,2	0,13	46,0	1,81	19	0,75		
M3S-C3-*	3mm Tube fittings	3mm Tube fittings	2,2	0,09	58,9	2,32	19	0,75	12	0,47
4S-C3-*	1/4" Tube fittings	1/4" Tube fittings	4,5	0,18	62,5	2,46	19	0,75	14	0,55
4A-C3-*	1/4" Tubeadapter	1/4" Tube adapter	4,5	0,18	58,6	2,31	19	0,75		
4M-C3-*	1/4" Male NPT	1/4" Male NPT	4,5	0,18	56,5	2,22	19	0,75		
4F-C3-*	1/4" Female NPT	1/4" Female NPT	4,5	0,18	58,5	2,30	19	0,75		
4M4F-C3-*	1/4" Male NPT	1/4" Female NPT	4,5	0,18	57,5	2,26	19	0,75		
4F4M-C3-*	1/4" Female NPT	1/4" Male NPT	4,5	0,18	57,5	2,26	19	0,75		
4M4S-C3-*	1/4" Male NPT	1/4" Sagalok	4,5	0,18	60	2,36	19	0,75		
4MP-C3-*	1/4" Male BSPP	1/4" Male BSPP	4,5	0,18	54	2,13	19	0,75		
4FP-C3-*	1/4" Female BSPP	1/4" Female BSPP	4,5	0,18	47	1,85	19	0,75		
4MT-C3-*	1/4" Male BSPT	1/4" Male BSPT	4,5	0,18	56,5	2,22	19	0,75		
4FT-C3-*	1/4" Female BSPT	1/4" Female BSPT	4,5	0,18	58	2,28	19	0,75		
4V-C3-*	1/4" Male Gazel®	1/4" Male Gazel®	4,5	0,18	58	2,28	19	0,75		
M6S-C3-*	6mm Tube fittings	6mm Tube fittings	4	0,16	61,8	2,43	19	0,75	14	0,55
6S-C3-*	3/8" Tube fittings	3/8" Tube fittings	7,1	0,28	83	3,27	26	1,02	19	0,75
6A-C3-*	3/8" Tube adapter	3/8" Tube adapter	7,1	0,28	78,5	3,09	26	1,02		
6M-C3-*	3/8" Male NPT	3/8" Male NPT	9,1	0,36	72,2	2,84	26	1,02		
6F-C3-*	3/8" Female NPT	3/8" Female NPT	9,1	0,36	72,2	2,84	26	1,02		
6M 6F-C3-*	3/8" Male NPT	3/8" Female NPT	9,1	0,36	72,2	2,84	26	1,02		
6F6M-C3-*	3/8" Female NPT	3/8" Male NPT	9,1	0,36	72,2	2,84	26	1,02		
6M 6S-C3-*	3/8" Male NPT	3/8" Tube fittings	7,1	0,28	77,5	3,05	26	1,02		
6M 8S-C3-*	3/8" Male NPT	1/2" Tube fittings	9,1	0,36	80	3,15	26	1,02		
6M P-C3-*	3/8" Male BSPP	3/8" Male BSPP	9,1	0,36	66	2,60	26	1,02		
6FP-C3-*	3/8" Female BSPP	3/8" Female BSPP	9,1	0,36	67,6	2,66	26	1,02		
6MT-C3-*	3/8" Male BSPT	3/8" Male BSPT	9,1	0,36	72,2	2,84	26	1,02		
6FT-C3-*	3/8" Female BSPT	3/8" Female BSPT	9,1	0,36	72,2	2,84	26	1,02		
M8S-C3-*	8mm Tube fittings	8mm Tube fittings	6,4	0,25	82,2	3,24	26	1,02	17	0,67
M10S-C3-*	10mm Tube fittings	10mm Tube fittings	7,9	0,31	84	3,31	26	1,02	19	0,75
8S-C3-*	1/2" Tube fittings	1/2" Tube fittings	10	0,39	92	3,62	32	1,26	22	0,87
8A-C3-*	1/2" Tube adapter	1/2" Tube adapter	10	0,39	94	3,70	32	1,26		
8M-C3-*	1/2" Male NPT	1/2" Male NPT	10	0,39	86	3,39	32	1,26		
8F-C3-*	1/2" Female NPT	1/2" Female NPT	10	0,39	87	3,43	32	1,26		
8M8F-C3-*	1/2" Male NPT	1/2" Female NPT	10	0,39	86	3,39	32	1,26		
8F8M-C3-*	1/2" Female NPT	1/2" Male NPT	10	0,39	86	3,39	32	1,26		
8M8S-C3-*	1/2" Male NPT	1/2" Tube fittings	10	0,39	88,8	3,50	32	1,26		
8MP-C3-*	1/2" Male BSPP	1/2" Male BSPP	10	0,39	76,3	3,00	32	1,26		
8FP-C3-*	1/2" Female BSPP	1/2" Female BSPP	10	0,39	97,5	3,84	32	1,26		
8MT-C3-*	1/2" Male BSPT	1/2" Male BSPT	10	0,39	86	3,39	32	1,26		
8FT-C3-*	1/2" Female BSPT	1/2" Female BSPT	10	0,39	86	3,39	32	1,26		
8V-C3-*	1/2" Male Gazel®	1/2" Male Gazel®	10	0,39	89	3,50	32	1,26		
M12S-C3-*	12mm Tube fittings	12mm Tube fittings	9,5	0,37	92	3,62	32	1,26	22	0,87

Dimensions are measured with nuts in the finger tight position.

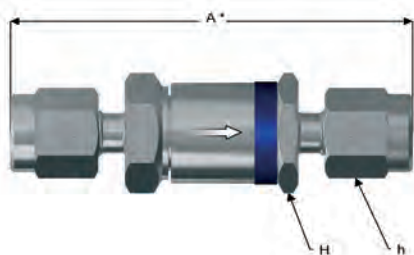
DIMENSIONS

Part Number	Connections		Orifice Size		A*		H		h	
	Inlet	Outlet	mm	inch	mm	inch	mm	inch	mm	inch
12S-C3-*	3/4" Tube fittings	3/4" Tube fittings	15,1	0,59	104	4,09	36	1,42	30	1,18
12A-C3-*	3/4" Tube adapter	3/4" Tube adapter	15,1	0,59	109	4,29	36	1,42		
12M-C3-*	3/4" Male NPT	3/4" Male NPT	15,1	0,59	95	3,74	36	1,42		
12F-C3-*	3/4" Female NPT	3/4" Female NPT	15,1	0,59	95	3,74	36	1,42		
12M12F-C3-*	3/4" Male NPT	3/4" Female NPT	15,1	0,59	95	3,74	36	1,42		
12F12M-C3-*	3/4" Female NPT	3/4" Male NPT	15,1	0,59	95	3,74	36	1,42		
12M12S-C3-*	3/4" Male NPT	3/4" Tube fittings	15,1	0,59	101	3,98	36	1,42		
12MP-C3-*	3/4" Male BSPP	3/4" Male BSPP	15,1	0,59	96,3	3,79	36	1,42		
12FP-C3-*	3/4" Female BSPP	3/4" Female BSPP	15,1	0,59	89	3,50	36	1,42		
12MT-C3-*	3/4" Male BSPT	3/4" Male BSPT	15,1	0,59	98	3,86	36	1,42		
12FT-C3-*	3/4" Female BSPT	3/4" Female BSPT	15,1	0,59	98	3,86	36	1,42		
12V-C3-*	3/4" Male Gazel®	3/4" Male Gazel®	15,1	0,59	110,5	4,35	36	1,42		
M20S-C3-*	20mm Tube fittings	20mm Tube fittings	15,1	0,59	105	4,13	36	1,42	32	1,26
M22S-C3-*	22mm Tube fittings	22mm Tube fittings	15,1	0,59	105	4,13	36	1,42	32	1,26
16S-C3-*	1" Tube fittings	1" Tube fittings	16,7	0,66	117	4,61	42	1,65	38	1,50
16A-C3-*	1" Tube adapter	1" Tube adapter	16,7	0,66	119	4,69	42	1,65		
16M-C3-*	1" Male NPT	1" Male NPT	16,7	0,66	103	4,06	42	1,65		
16F-C3-*	1" Female NPT	1" Female NPT	16,7	0,66	103	4,06	42	1,65		
16M16F-C3-*	1" Male NPT	1" Female NPT	16,7	0,66	103	4,06	42	1,65		
16F16M-C3-*	1" Female NPT	1" Male NPT	16,7	0,66	103	4,06	42	1,65		
16M16S-C3-*	1" Male NPT	1" Tube fittings	16,7	0,66	110	4,33	42	1,65		
16M P-C32-*	1" Male BSPP	1" Male BSPP	16,7	0,66	98	3,86	42	1,65		
16FP-C3-*	1" Female BSPP	1" Female BSPP	16,7	0,66	103	4,06	42	1,65		
16M T-C3-*	1" Male BSPT	1" Male BSPT	16,7	0,66	103	4,06	42	1,65		
16FT-C3-*	1" Female BSPT	1" Female BSPT	16,7	0,66	103	4,06	42	1,65		
16V-C3-*	1" Male Gazel®	1" Male Gazel®	16,7	0,66	106	4,17	42	1,65		
M25S-C3-*	25mm Tube fittings	25mm Tube fittings	16,7	0,66	119	4,69	42	1,65	25	0,98

HOW TO ORDER (Example: 8S - 8M - C3 - 3 - SS - NBR)

Inlet connections	Outlet connections	Serie	Cracking pressure	Material	O-ring Material	
8S	8M	C3	3	SS	NBR	
2S, 2A, 2M, 2F, 2MP, 2FP, 2MT, 2FT, M3	2S, 2A, 2M, 2F, 2MP, 2FP, 2MT, 2FT, M3	C1	1/3	Stainless steel	SS	FPM*
4S, 4A, 4M, 4F, 4MP, 4FP, 4MT, 4FT, 4V, M6	4S, 4A, 4M, 4F, 4MP, 4FP, 4MT, 4FT, 4V, M6		1	Brass	B	NBR
6S, 6A, 6M, 6F, 6MP, M10, 6FP, 6MT, 6FT, M8	6S, 6A, 6M, 6F, 6MP, M10, 6FP, 6MT, 6FT, M8		2			EPDM
8S, 8A, 8M, 8F, 8MP, 8FP, 8MT, 8FT, 8V, M12	8S, 8A, 8M, 8F, 8M, 8FP, 8MT, 8FT, 8V, M12		3			PTFE
12S, 12A, 12M, 12F, 12MP, M22, 12FP, 12MT, 12FT, 12V, M20	12S, 12A, 12M, 12F, 12MP, M22, 12FP, 12MT, 12FT, 12V, M20		4			
16S, 16A, 16M, 16F, 16MP, 16FP, 16MT, 16FT, 16V, M25	16S, 16A, 16M, 16F, 16MP, 16FP, 16MT, 16FT, 16V, M25		10			
			25			
			40			
			50			
			100			

* FPM is the standard, you don't have to specify it.
See page 04 for connections



Cracking pressure	Label color
1/3 psig	White
1 psig	Grey
2 psig	Yellow
3 psig	Orange
4 psig	Pink
10 psig	Red
25 psig	Brown
40 psig	Green
50 psig	Blue
100 psig	Black