

# BOISWOOD

GAS AND LIQUID CONTROL TECHNOLOGIES

Pressure & Vacuum

Flow

Level & Temperature

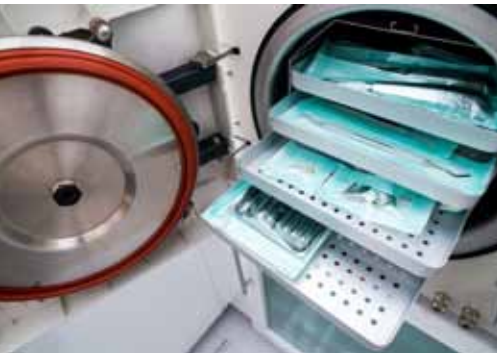
Tube & Fittings

HVAC/R

Custom Services

## Pharmaceutical & Medical Products and Services Catalogue





## WE'RE KNOWN FOR SELLING SOLUTIONS

**Our journey started in 1989, when Boiswood was founded. As our knowledge and expertise grew, so did our vast range of products and services, and today, we are one of the country's most well respected and trusted suppliers of gas and liquid control technologies.**

We are partnered with several high-quality, globally reputable manufacturers with a distinct range of products and services that offer unique features and benefits to EPC's, System Integrators, OEM's and End Users....our customers.

Our whole business culture centres around our genuine commitment to hands-on service and support, whenever and wherever this is required. We offer unparalleled advice and support, and our 'one stop shop' approach removes all the headache and hassle from our customers, ensuring you always get what you need on-time, on-budget and the perfect fit for your application.

We have over 30 years of successful experience in an extensive range of applications and processes within the markets we serve. Our visionary, technically astute and customer focused approach ensures we consistently add value. Working closely with our customers and supply partners ensures we stay up to date with the latest technologies, using our insight to facilitate the niche and specialist markets we serve.

You can rely on us to specify, supply and support all your gas and liquid control needs.

Ultra-clean and high purity products are of critical importance within the pharmaceutical and medical industries, and at Boiswood, we can offer customers standalone components or complete turnkey solutions designed around your specific application.

## CLEAN YOUR CONSCIENCE

We partner with experts in the field, who specialise in designing and manufacturing the safest and cleanest products available on the market. All our manufacturers undergo rigorous testing and meticulous quality assurance in order to guarantee efficient, clean and safe products ready for installation.

We can offer pressure regulators, room condition monitors, environment monitors, level sensors, flow switches and pressure transducers for applications including medical lasers, surgical systems, analytical instruments, autoclaves, cleanrooms, filling lines, hospitals and operating theatres.

## WE'RE TRUSTED BY...



# Product Solutions

## RX2400 SERIES

High Purity Single Stage Regulators



★★ ROTAREX  
VALVES • FITTINGS • REGULATORS

Pg.  
17

The RX2400 Series is a diaphragm controlled pressure regulator, designed for medium flow rates in high purity applications.

### TECHNICAL DATA:

100% Functional & Helium Leak Test Performed • Hastelloy Diaphragm • Low Internal Volume • Fluid Specific Seat Materials Available • Up to 240 BAR Inlet Pressure • -20°C to +65°C Temperature Range • CV values up to 0.20

### FEATURES & BENEFITS:

No Spring in Gas Flow (True UHP) • Suitable for Aggressive Media • Individual serial number for full traceability • Assembled in Class ISO 4 Cleanroom • Electropolished as per SEMI F19 UHP Grade

## M4SI SERIES

High Purity Diaphragm Valves



setra

The M4SI Series is a manual or pneumatically actuated diaphragm valve, designed for medium flow rates in high purity applications.

### TECHNICAL DATA:

100% Functional & Helium Leak Test Performed • Reverse Seat Design for High Life Cycle • Constant Bleed Option Available • Up to 240 BAR Pressure • -40°C to +150°C Temperature Range • CV of 0.20

### FEATURES & BENEFITS:

Fast Delivery • LOTO Available • Individual serial number for full traceability • Assembled in Class ISO 4 Cleanroom • Electropolished as per SEMI F19 UHP Grade

## LITE SERIES

Digital Visual Pressure Indicators



setra

Pg.  
15

The Lite provides a simple, cost-effective, and accurate way to measure and display room differential pressures in areas that typically require manual verification.

### TECHNICAL DATA:

±50 Pa up to 250 Pa Pressure Ranges • Available in " W.C. • ±0.5% FS Accuracy • 0-5, 0-10 or 4-20 mA Output (Field Selectable) • 24 VAC or 24 VDC Excitation • RGB Colour Display with LED Backlight • 3/16" Barbed Pressure Fittings • 0 to +50°C Operating Temperature

### FEATURES & BENEFITS:

Simple to Install • Red and Green Visual Alarm • Audible Alarm Optional • 3-Button Easy to Use Interface • Sleek and Attractive Wall Plate • Saves Preventative Maintenance • Fully User Configurable

## 125 SERIES Adjustable Flow Monitors



ChemTec

The 125 Series standard unobtrusive adjustable flow monitor for use on both corrosive and non-corrosive liquids and gases.

### TECHNICAL DATA:

Gas or Liquid Service • Available in 316SS, Brass or Teflon • Broad Range of Adjustability • From 30 to 16,000 SCC/M (Air) or 1 to 500 ML/M (Water) • -17 to +104°C Temperature Ranges • From 80 to 3,000 PSIG Max. Operating Pressures

### FEATURES & BENEFITS:

Unobtrusive right angle flow path • Operates via magnetic piston • Very low pressure drop • Compact Size and High Resolution • Special Designs available on request

## EFV SERIES Automatic Excess Flow Valves



ChemTec

The EFV adjustable excess flow valve is perfect for preventing uncontrolled flows of liquids and gases. Using a controlled bleed it can reset automatically and can restrict or shut off flow completely.

### TECHNICAL DATA:

Available from 0.5 up to 3681 SLPM (Air) or 0.015 to 75.7 LPM (Water) • 1/8" – 3/4" FNPT Ports (as Standard) • Stainless Steel or Brass Construction • Positive Shut Off Available • Fully custom models can be quoted on request

### FEATURES & BENEFITS:

Unobtrusive right angle flow path to prevent blockage in the line • Operates via magnetic piston rather than spring design • Very low pressure drop • Adjustable flow range (not fixed)

## SRCM SERIES Room Condition Monitors



setra

The SRCM is the highest performance BACnet capable product for measuring low differential pressure in critical environments.

### TECHNICAL DATA:

Dead-ended On-Board Sensor • 4.3" Colour LCD Display for Easy Setup and Room Display • Configurable Audible & Visual Alarms • Accuracy down to  $\pm 0.25\%$  • Up to 1,000 Pa Pressure Range • BACnet Capable

### FEATURES & BENEFITS:

Monitor 2 rooms with one single device • Save on Calibration and Installation • Maximise Safety



# Product Solutions

## LPH SERIES

Non-Adjustable Flow Monitors



ChemTec

The LPH series non-adjustable flow monitor provides a cost-effective solution for all applications.

### TECHNICAL DATA:

Available from 50 up to 45,300 SCC/M (Air) or 1 to 2,200 ML/M (Water)

- 1/8" – 1/4" FNPT Ports (as Standard)
- Stainless Steel, Brass, Acrylic or Teflon® Construction
- Electrical Conduit Optional
- Range of Switch Options

### FEATURES & BENEFITS:

- Compact Design
- Economical Pricing (OEM)
- Close On/Off Differential
- No Seals Required
- Visual Indication (with Acrylic model)
- In-line vertical plumbing

## 730 SERIES

Vacuum Capacitance Manometers



setra

The 730 series high accuracy capacitance manometer is for measuring low vacuum pressure ranges that are critical to the control of processes in photovoltaic and semiconductor markets.

### TECHNICAL DATA:

From 10 Torr to 20 mBAR Pressure Ranges • Voltage Output • ISO NW, FaceSeal™, Tube or NPT Connections • Down to  $\pm 0.5\%$  Accuracy Available

- 0°C to +80°C Temperature
- Compatible with LD330 Display

### FEATURES & BENEFITS:

- Chemical Resistive Inconel® Design
- Tensioned Diaphragm Provides Superior Performance v Fast Response Time with Low Circuit Noise
- Insensitive to Environmental Changes

## LS-3 SERIES

Single Point Level Switches



Gems  
Sensors & Controls

The LS-3 small sized single point level switches are ideal for shallow tanks or restricted spaces, for any low-cost and high volume use. Engineered plastics are available in FDA compliant materials.

### TECHNICAL DATA:

Available with NPT, Straight and Metric Threads • Polysulfone, Polypropylene, Nitrile and PVDF Materials • Range of Pressures and Temperatures to suit your requirements

### FEATURES & BENEFITS:

- Low Cost OEM Pricing
- High Reliability
- Compact Size
- FDA Compliant Materials Available

## 290 SERIES Sanitary Pressure Transducers



The 290 series is one of the highest accuracy solutions for measuring gauge and compound pressure ranges in sanitary processing applications.

### TECHNICAL DATA:

From 1 to 1,000 PSI Pressure Ranges • PSI or mBAR Measuring Units • Gauge or Compound Pressure Types • 1-1/2" or 2" Tri-Clover Fittings • 4 to 20 mA Output • Down to  $\pm 0.1\%$  FS Accuracy • 316L Stainless Steel Construction

### FEATURES & BENEFITS:

Meets 3A Sanitary Standards • Eliminates Process Contamination Risk • Robust Non-Liquid Filled Capacitive Sensor • Negligible Clamping Effect for Easy Installation • Designed for CIP & SIP

## ASL SERIES Low Differential Pressure Transducers



The ASL series is the highest accuracy transducer for measuring low differential pressure in the AccuSense™ product line, ideal for medical and pharmaceutical instrumentation.

### TECHNICAL DATA:

Up to 40" WC Pressure Ranges • Also Available in mBAR, PSID and Pa Pressure Ranges • Current or Voltage Output • 1/8" NPT Process Ports • Down to  $\pm 0.07\%$  FS Accuracy • -40 to +85°C Temperature • 3ft Cable or Bayonet Connector

### FEATURES & BENEFITS:

Reduce Calibration Time • High Accuracy • End Point Method Linearity • High Overpressure (x100 Range) • Low Thermal Error • Excellent Stability • Unidirectional and Bidirectional Models

## 210 SERIES Circuit Board-Mountable Sensors



The 210 series is the ultimate in circuit board-mountable pressure transducers. In addition to the convenience of quick PCB installations, this model offers wide media compatibility.

### TECHNICAL DATA:

From 1 to 150 PSI Pressure Ranges • Straight or Right Angle Tube Fittings • 0 – 5 VDC Power • 0.5 – 4.5 VDC Output • PC Board Mountable Pins • Down to  $\pm 0.5\%$  FS Accuracy • -20 to +80°C Temperature Range

### FEATURES & BENEFITS:

Fully Signal Conditioned • High Level Output • Excellent Long Term Stability • RFI/EMI Immunity • Non-Oil Filled Sensor • Easily Customised Package • High Signal to Noise Ratio

# Product Solutions

## UPM SERIES

High Purity Diaphragm Valves



The UPM series pneumatically or manually actuated diaphragm valves provide ultimate performance for your UHP applications.

### TECHNICAL DATA:

Manual or Pneumatic Actuation • 2 or 3 Way Valves • 1/4" to 3/4" End Connections (FlareGrip™, Fusebond® or Super 300) • All virgin PTFE/PFA wetted flow paths

### FEATURES & BENEFITS:

Superior life expectancy • Assembled and double bagged in Class 100 Cleanroom • No exposed metallics • Integral swivel base for ease of mounting • Leak detection port as standard

## ASTIPURE™ II SERIES

High Purity Pumps



The Astipure™ II series pneumatically operated bellows pumps are suitable for handling the most aggressive concentrate chemicals.

### TECHNICAL DATA:

From 15 up to 60 LPM Flow Rates • 1/2" to 1" End Connections (FlareGrip™ or Tube End) • Chemical or Slurry Options • All virgin PTFE/PFA wetted flow paths

### FEATURES & BENEFITS:

No metal parts • Unique recirculating pilot air concept to improve system uptime • Stall-proof twin shuttle option available • 2-Year Warranty as standard (renewable to 6 year with maintenance)

## DM152 SERIES

High Purity Pressure Reducing Valves



The DM152 self-acting pressure reducing valves were designed specifically with CIP/SIP hygienic applications and ultra-pure media in mind.

### TECHNICAL DATA:

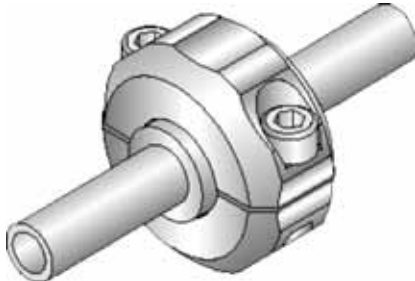
DN15 to DN50 Connections • Up to 8 BAR Inlet Pressure • 0.3 to 5 BAR Outlet Ranges • 2 to 7 m³/h KVS Values • Up to +180°C Temperature • For Liquids, Gases and Steam • Internal surface quality up to 0.25 µm available

### FEATURES & BENEFITS:

Low thermal losses during CIP/SIP applications • Easy to clean and maintain • Long operational lifespan • FDA, BGV and USP approved



## RHP SERIES High Purity Fittings



The RHP series of high purity fittings are designed to work with two half clamps, the centre ring and screw together with a PTFE protection ring.

### TECHNICAL DATA:

From 12mm to 114.3mm OD Sizes • Sets include clamps, centre ring, screws and PTFE protection ring • 316L Stainless Steel Components • Electropolishing and passivation • -100 to +550°C Temperature Ranges • <1.10-10 Atm.cm<sup>3</sup>/s Helium Leak Rate

### FEATURES & BENEFITS:

No Gasket Required • Metal-to-Metal Sealing • No Dead Volume • Easy Assembly and Disassembly • Reduced Footprint • No Male and Female Mixing • Axial Tightening (no tube twisting)

## 1700 SERIES Hygienic Pressure Transmitters



The 1700 Series features a stainless steel diaphragm with various process connections suitable for dairy and other hygienic applications.

### TECHNICAL DATA:

Pressure Ranges from 100 Millibar to 40 BAR • Sanitary or G1" Process Connections • Voltage and Current Output Models • Temperature Cooling Options Available • ATEX Approved

### FEATURES & BENEFITS:

Optional Mobil DTEFM32 filling liquid

## UNIVERS 1200 SERIES Cryogenic Globe Valves



The Univers 1200 is a high quality stainless steel valve designed for gaseous and liquid media. Straight or angle configuration is available with a wide range of end connections suited for your application.

### TECHNICAL DATA:

Available in Manual, Pneumatic and Electric versions • -269°C to +50°C Operating Temperature Range • Up to 40 BAR Nominal Pressure • Available in DN10 – DN300 • Variety of service fluids • Position Indicators, IP Regulators and Limit Switches Optional

### FEATURES & BENEFITS:

Stainless Steel bellows allows for a long life span • High leak-tightness to atmosphere • Valve body machined from one piece of stainless steel • Fully Customisable • Check Valve and Filter Versions Available

# Product Solutions

## BSC 280/380 SERIES Medical Cartridge Regulators



★ ROTAREX  
★

The BSC 280/380 single stage cartridge regulator is designed for use in medical applications and is certified according to MDD 93/42/EEC amended 2007/47/EC.

### TECHNICAL DATA:

Chrome Plated Brass Body Material • Inlet Pressures up to 300 BAR • Outlet Pressures from 4 to 8 BAR • 25 Nm<sup>3</sup>/h Nominal Flow • -40 to +60°C Temperature Range • Available with Pressure Sensors • Inlet Bottle Connector to suit required standard

### FEATURES & BENEFITS:

Proven Cartridge Seat Technology • Compact and Lightweight Design • Long Operational Lifespan • Easy Maintenance • Metal-to-Metal Sealing to Prevent Contamination • Great Flow Stability

## 8098 SERIES Flowave Saw Flow Meters



bürkert  
FLUID CONTROL SYSTEMS

The 8098 series flowmeter is based on SAW (surface acoustic waves) technology and is designed for applications that have the highest in hygienic demands.

### TECHNICAL DATA:

DN15 to DN50 Connections • Range of Process Connections • 316L Stainless Steel Wetted Parts • Down to <0.4 µm Ra • From 7 to 90 m<sup>3</sup>/h Flow Measuring Ranges • -20 to +110°C Temperature Range • 12 to 35 VDC Power • 4 to 20 mA Output

### FEATURES & BENEFITS:

Without any parts in the measuring tube • Conforms to CIP & SIP hygienic standards • Ideal for liquids with low or no conductivity • Digital communication, parameter setting, display and Wi-Fi

## MIM SERIES Magnetic Inductive Flowmeters



KOBOLD

The MIM series was developed for measuring and monitoring small to medium sized flow of conductive liquids in pipelines.

### TECHNICAL DATA:

0.03 to 3 up to 1.5 to 350 L/min (Liquids) • 16 BAR Nominal Pressure • Up to +140°C Temperature • 1/2" to 2" Connections (NPT or BSPP) • Stainless Steel Construction • 2 x Analogue, Pulse, Frequency, Alarm or IO-Link • 1 x Control Input

### FEATURES & BENEFITS:

Rotatable IFT Display (Non-misting/condensation) • Compact design • Integrated PT1000 optional • Bidirectional measurement • Dosing function and grand totaliser options available

## AS2 SERIES

Gas and Liquid Separators



**MANKENBERG**

The AS2 series centrifugal separators use the cyclone principle to automatically separate liquids, solids and steam from gas flows whilst the system is pressurised.

### TECHNICAL DATA:

DN15 to DN50 or G1/2 to G2" Connections • 16 BAR Nominal Pressure • 0 – 13 BAR Operating Pressures • Up to 1,200 L/hr Collection Efficiency • Up to +190°C Temperature • For Gases and Steam

### FEATURES & BENEFITS:

Inline Design with Drain Outlet • Built-In Steam Trap • Compact and Lightweight Design • Corrosion Resistant Stainless Steel • Up to 99% Separation Performance • Suitable for Vacuum Systems

## UV3.8M SERIES

Back Pressure/Overflow Valves



**MANKENBERG**

The UV3.8M is a piston-sensed self-acting back pressure regulator, offering simple and accurate pressure control in an easy-to-maintain design.

### TECHNICAL DATA:

DN15 to DN50 or G1/2 to G2" Connections • 10 to 16 BAR Nominal Pressures • 2 to 16 BAR Control Pressures • 3.5 to 9 m³/h KVS Values • Up to +180°C Temperatures • For Liquids and Gases • Down to ≤0.8 µm Surface Roughness

### FEATURES & BENEFITS:

Low Thermal Loss during CIP & SIP Applications • Very Short Cleaning and Sterilisation Times • Automatic Cleaning Cycles • Long Operational Lifespan • BGV, FDA & USP Compliant

## DM462V SERIES

High Purity Pressure Regulators



**MANKENBERG**

The DM462V self-acting pressure reducing valve is a double-seat diaphragm controlled and spring loaded proportional control valve designed for use in CIP/SIP hygienic applications.

### TECHNICAL DATA:

DN25 Connections • Up to 8 BAR Inlet Pressure • 0.8 to 5 BAR Outlet Ranges • 4 m³/h KVS Value • Up to +180°C Temperature • For Liquids, Gases and Steam • Internal surface quality up to 0.25 µm available

### FEATURES & BENEFITS:

Low thermal losses during CIP/SIP applications • Easy to clean and maintain • Long operational lifespan • FDA, BGV and USP approved • Flexible Installation • Low Dead Pockets (No O-Ring Abrasion)

## DUC SERIES

Clamp-On Ultrasonic Flowmeters



The DUC series uses the effect of acceleration/deceleration of acoustic signals travelling in a moving fluid to measure ultrasonic conducting liquids within pipework.

### TECHNICAL DATA:

From 0 to 30 m/s Measuring Range (Flow Velocities) • DN10 to DN6000 Connection Sizes • -40 to +150°C Temperature Measuring Range v Accuracy up to  $\pm 1\%$  • Stationery or Portable Versions Available

### FEATURES & BENEFITS:

Clear User Interface with LED Backlit Display • 2 Channel Operation • Reduces Signal Echoes • Quick Mount System with Space Bar • Compensates changing Temperatures

## UCL-510 SERIES

Ultrasonic Level Transmitters



The UCL-510 is a general purpose ultrasonic level sensor providing non-contact detection as a continuous transmitter or multi-point switching combination.

### TECHNICAL DATA:

49" (1.25m) Measuring Range • 1" NPT Mounting • 4 – 20 mA Output • -7 to +60°C Temperature Range • USB 2.0 PC (Windows) Configuration Software • 30 PSI Max. Operating Pressure • 48" (1.2m) Cable Length • 24VDC Loop Supply Power

### FEATURES & BENEFITS:

Compact Design • 2" Dead Band • Beam Width Optimised for Small Tanks • Reliable alternative to float and conductivity • Designed for use on corrosive or dirty media v Provides full pump or valve control

## B-CRYO SERIES

Cryogenic Solenoid Valves



The B-Cryo Series is a 2-way miniature cryogenic valve designed and built for service down to liquid nitrogen temperatures.

### TECHNICAL DATA:

MOPD of 900 PSI • CV Ranges of 0.045 – 0.440 • 9 Watts • Service down to -196°C • Configured for LN2 or LCO2 v PTFE Coated Plungers • Encapsulated Coils

### FEATURES & BENEFITS:

Depending on your application requirements it can be configured to a range of service fluids with a variation of construction materials • Designed for OEM applications

# Product Solutions



Model	FLEX	LITE	SRPM	SRCM	SRIM2	SRMD
<b>Description</b>	Environmental Monitor	Visual Pressure Indicator	Room Pressure Monitor	Room Condition Monitor	Room Isolation Monitor	Room Monitoring Displays
<b>Sample Applications</b>	Hospitals (ASHRAE), Pharmacies (USP), Server Rooms, Data Centres	Hospitals, HVAC/R Systems, Data Centres, Pharma Facilities	Hospitals, Pharma Facilities, Vivariums	Hospitals, Pharma Facilities, Vivariums, Cleanrooms	Hospitals, Operating Theatres, Isolation Rooms, Cleanrooms	Hospitals, Operating Theatres, Pharma Facilities Cleanrooms
<b>Key Features</b>	Monitor and Control Up to 3 Spaces 6 Parameters Per Room (18 in Total) Integrates with BMS ASHRAE and USP Approved	Saves Preventive Maintenance Sleek and Attractive Wallplate User-Friendly Configuration	Easy Surface Mounting Setup One Requires Zeroing Once on Install Industry Best Accuracy	Monitor up to 4 Parameters Reduce Installation Time User-Friendly Configuration	Removable Faceplate for Easy Calibration Flush Mount and Surface Mount Dead-Ended On-Board Sensor	Single or Dual Display Fits into standard Electrical Gang Box Easy to Read from Up to 30'
<b>Unit Type</b>	Monitor or Controller	Monitor	Monitor	Monitor	Monitor	Monitor
<b>Pressure Ranges</b> (Showing Min/Max Ranges)	±0.05 to ±1.00" WC ±12.5 to ±250 Pa (Also Available without any On-Board Sensor)	±0.25 to ±1" WC ±50 to ±250 Pa	±0.1 to ±5" WC	±0.05 to ±5" WC ±12.5 to ±1,000 Pa	-0.05 to +5" WC -12.5 to +2,500 Pa (Unidirectional/ Bidirectional)	N/A
<b>Accuracy</b>	±0.25% FS	±0.5% FS	±0.5% FS ±0.25% FS	±0.5% FS ±0.25% FS	±1% FS ±0.5% FS ±0.25% FS	±1% FS
<b>Operating Temperature Range</b>	0 to +50°C	0 to +50°C	0 to +50°C	0 to +50°C	-6 to +60°C	-10 to +50°C
<b>Display</b>	7" Touchscreen (Usable with Medical Gloves)	LED Touchscreen with Light Ring	LCD Colour Touchscreen	LCD Colour Touchscreen	3-Colour Display with Push Buttons	1" Illuminated LCD Characters (RGB)
<b>Parameters</b>	Pressure, Temperature, Velocity, Door Sensor, Particle Sensing, Humidity	Pressure	Pressure, Door Sensor	Pressure, Temperature, Humidity, User-Defined (e.g. ACH)	Pressure, Temperature, Relative Humidity, Door Sensor	Any
<b>Output</b> (Consult for full details)	0 to 5 V 0 to 10 V 4 – 20 mA	0 to 5 V 0 to 10 V 4 – 20 mA	0 to 5 V 0 to 10 V 4 – 20 mA	0 to 5 V 0 to 10 V 4 – 20 mA	0 to 5 V 0 to 10 V 4 – 20 mA	0 to 5 V 0 to 10 V
<b>Communications</b>	BACnet® IP BACnet® MS/TP	N/A	BACnet®	BACnet®	N/A	N/A
<b>Pressure Fittings</b>	3/16" Barbed Brass	3/16" Barbed Brass	3/16" Barbed Brass	3/16" Barbed Brass	3/16" Barbed Brass	N/A
<b>Other Configurations</b>	Pressure Snubbers	Inside Room Option Audible Alarm	Higher Accuracy	Pressure Snubbers Blank Faceplate	Wall or Duct Mount Stainless Steel Bezel Blank Faceplate Pressure Snubbers	Metallic Bezel R, G, or B Display

\*For special options not listed please contact us.



# Product Solutions



## PRESSURE GAUGES

Including Mechanical and Digital Pressure Gauges and Indicators



## INSTRUMENTATION VALVES

Including Ball, Needle, Plug, Check, Toggle, Relief and Quick Connects



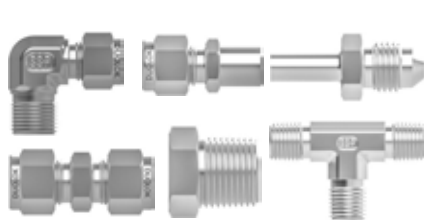
## MANIFOLD VALVES

Including Block, Bleed, Vent and Gauge Manifolds



## CONTROL VALVES

A range of pneumatic and electric Globe, Bellows and Control Valves



## INSTRUMENTATION FITTINGS

Including Twin Ferrule Compression Tube, Pipe and Weld Fittings



## HIGH PURITY FITTINGS

Including FaceSeal™, Microweld and PFA/PTFE Fittings



## FILTERS, STRAINERS & SEPARATORS

A range of filters, strainers and separators for process and vacuum



## BURSTING DISKS

Including forward and reverse acting bursting disks and holders



## TUBING, PIPING AND HOSES

A selection of metal tubing, hoses and PTFE/PFA piping.



## PRESSURE SWITCHES

Including Mechanical and Digital Pressure Switches and Sensors



## SOLENOID VALVES

Including miniature, latching and cryogenic versions.



## WIRES & SEALS

Including feedthroughs, sealing glands and packing glands.



## CUSTOM SOLUTIONS

Boiswood have been involved in several custom build projects to meet our customers' specific requirements, please visit our website to read our application successes or feel free to ask for more details.

Many of our customers call upon us for subassembly, service, repair and testing solutions from within our manufacturer-certified headquarters.

## Value Added Services



### In-House Service Centre

We can offer manufacturer certified in-house evaluation, repair, testing, servicing and assembly of our products from within our Boiswood HQ.



### Local Technical Support

We offer a technical helpline from our HQ as well as having a “man on the ground” for on-site support whenever and wherever this is required.



### Fast Turnaround

Our local stocks allow us to quickly respond to requirements. We hold a vast range of products in stock so that they're always readily available.



### Training Services

We provide a range of educational classes and training seminars that can be delivered from Boiswood HQ or on-site.



### Design Services

Over the years we have been involved in many bespoke product designs and system build solutions for our customer base.



### Response Times

We endeavour to provide all our customers with unrivalled service with quick responses to both technical and commercial queries.



# Products in Focus



Pressure indication



Simple green status



Red indicates alarm

**setra**lite™  
Room Pressure Indicator

**Our Lite Visual Pressure Indicator provides a simple, cost-effective, and accurate way to measure and display room differential pressure to solve challenges in areas that require manual verification. The unit provides a clear indication of positive or negative room pressure using its intuitive light ring and has been cleverly designed to keep installation, set-up time and maintenance to an absolute minimum.**

## Solutions That Save Lives

- Simple pressure indication with local display and digital output as standard
- Offers preventative maintenance and minimal installation costs
- Fully configurable via touch buttons mounted on sleek and attractive wall plate

Developed with Hospital, Medical, Pharmaceutical and Clinical environments in mind, we are here to help you with speedy production and unrivalled technical support.

Centred around years of engineering, development and customer feedback, we have produced a complete solution to stage as an upgrade to Magnehelic pressure gauges. Our pressure sensor includes the Local Display and Digital Output as standard.

1. Model		2. Transducer Range		3. Accuracy		4. Special Options	
LITE	Setra Lite	R25WB	±0.25" WC	D	±0.5% FS	IR	Inside Room
		0R5WB	±0.5" WC			AA	Audible Alarm
		001WB	±1" WC				
		050LB	±50 Pa				
		100LB	±100 Pa				
		250LB	±250 Pa				



## FAST INSTALLATION 1

At the size of a standard light switch, the sleek and attractive wall plate allows the Lite to be installed in a matter of minutes.



## PREVENTATIVE MAINTENANCE 2

No more manually checking each room, save time and money by utilising the visual, audible and output options.



## SIMPLE TO CUSTOMISE 3

Full configuration is easy and user-friendly, with just 3 touch buttons to set your own custom parameters.



### Quick Mount Lite Kit

Available with temporary quick mount and portable pre-assembled configurations, we have optimised these custom solutions to help combat viral outbreaks and diseases to assist integrators with rapid critical care setup challenges.



### Construction Kit

The Lite Construction Kit provides everything you need to monitor spaces around on-site construction or fume extraction. Simply place the kit outside the work area and run the tubing inside to set up continuous readings and alarming. With this kit you can have the confidence that the surrounding areas are remaining safe and clean.



### AIIR Watch

The Lite AIIR Watch unit has been designed as a portable and on-demand solution for generating negative room pressures. The room pressure is monitored using a standard in-built Lite, whilst sterilising exhaust air with a UVC light and HEPA filter. This compact and quiet unit is delivered user-ready for schools, nursing homes, dentist offices, hair salons, office buildings and more.

# Products in Focus

## Selecting a UHP Regulator

**There is no compromising when it comes to ultra-high purity (UHP) gases – you need a regulator that will suffice reducing the pressure on a UHP line safely and effectively.**

UHP gases are used in the production of lots of equipment, from LEDs and photovoltaics to semiconductors, and pressure regulators must meet different specifications. Choosing the correct regulator that performs right for your application can provide challenging. Read through this guide to help you select the correct regulator:

### 1. Safety

What gas will your regulator be suited for?

UHP gases are known to be toxic, corrosive and flammable. The Rotarex pressure regulator goes through stringent helium leak tests, you can be assured that no harmful gas will leak through to atmosphere.

### 2. Purity

It is important to keep your gases uncontaminated. UHP gases that are deployed in cleanrooms, even the smallest imperfection can have a bad affect

on the whole system. The Rotarex equipment is assembled, tested and packaged in ISO 4 cleanrooms and electropolished to improve corrosion resistance.

Rotarex offers pressure regulators with no moving parts coming into contact with no gas at all. They avoid even the smallest sized particles produced by thread and spring-based mechanisms. The regulator can also receive additional surface treatment for especially pure gases.

### 3. Precision

You need to consider where on the line your UHP pressure regulator will be used. The supply pressure and maximum gas flow need to be considered for high-precision applications.

If the pressure regulator is installed just after the gas cylinder, it will need to be able to deal with extremely high inlet pressure, and effectively reduce it as it enters the much lower pressure pipes. When a pressure regulator is at the end of the line, where the inlet pressure will be low, the outlet pressure and flow will need to be considered and the flow coefficient (Cv) sized accordingly.



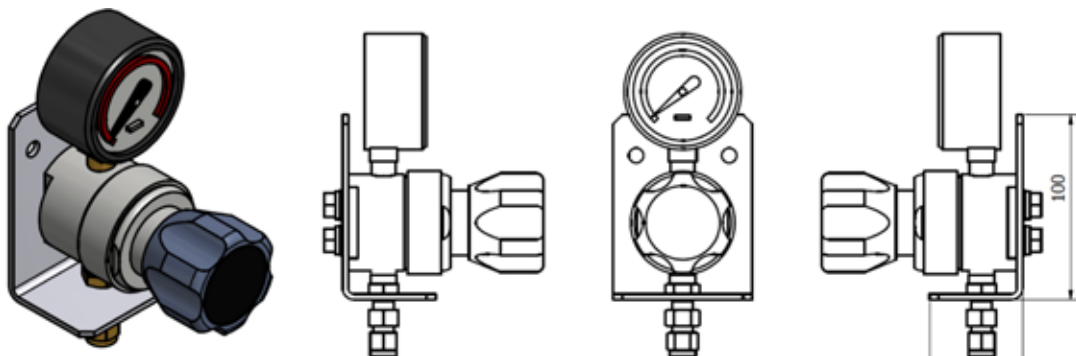


## Helium Recovery System Application

Our customer is a world-leader in their field of expertise, responsible for manufacturing magnets for a large portion of the best MRI scanners available on the market. This specific helium recovery application required designed and assembling subassemblies ready to “fit and forget”.

## Customer Requirements

100 subassemblies in total – one type consisting of a pressure reducing regulator with outlet gauge fitted, mounted to a specially designed back plate with a bulkhead tube fitting ready for piping in “plug and play” style; the other type is a custom brass manifold block with 3 different threaded connection feeds and fitted with a special scale colour coded pressure gauge.



## Why Boiswood Was Successful

We were chosen for the project as we could provide all of the required components, as well as meeting the special requirements by offering customised products, including assembly and testing all completed in-house faster and cheaper than any other competitor quoting. All subassemblies were completed and delivered ready to pipe straight into the helium recovery system.






Pressure Regulators, Self Acting Control Valves,  
Pressure Sensors & Switches, Safety Relief Valves,  
Gauges & Manometers




Flow Meters, Switches & Control Valves, Solenoid  
Valves, UHP & Cryogenic Valves, Excess Flow  
Valves, Filters, Strainers, Pumps & Mixers




Level Sensors, Indicators & Switches, Submersible  
Transducers, Float Valves, Bleeding & Venting  
Valves, Steam & Condensate Traps, Thermocouples



Tube, Pipe, Weld and UHP Fittings, Quick Connects,  
Instrumentation Valves, Bottle Connectors,  
Tubing, Piping & Flexible Hoses



Differential Pressure Sensors, Room Condition  
Monitors, Power Meters, Particle Counters,  
Humidity Sensors & Calibrators



Installation Training, Subassemblies, Valve Sizing,  
Servicing & Repairs, Site Surveys

# BOISWOOD

GAS AND LIQUID CONTROL TECHNOLOGIES

Spinnaker House, Hempsted Lane, Gloucester, GL2 5FD  
Tel: 01452 330011 Fax: 01452 330088 [info@boiswood.co.uk](mailto:info@boiswood.co.uk)  
[www.boiswood.co.uk](http://www.boiswood.co.uk)

